

# Quilters Guild

October 2015



# of Plano, Inc.

Volume 33, Issue 10

## INSIDE THIS ISSUE

The President Says . . . . .	1
Inside This Issue . . . . .	1
Guild Officers and Committee Chairs . . . . .	2
Destash Sale . . . . .	2
AD Rates . . . . .	2
2015 Quilt Show Inc. & Exp. . . . .	3
August Cash Flow . . . . .	3
Education News . . . . .	4
Community Service . . . . .	4
Happiness is Quilting AD . . . . .	4
Round Robin Mystery Quilt . . . . .	4
2016 Guild Retreat . . . . .	5
Sapphire Quilting AD . . . . .	5
Day Retreat Opportunity . . . . .	5
Upcoming Programs . . . . .	6
Membership News & B'days . . . . .	7
September General Minutes Mtg. . . . .	8
September Board Mtg. . . . .	9

## The President Says...

***“Those who sleep under a quilt are covered by love”.***

I'm finally down from the wonderful high that was Quilt Plano 2015. It was once again a week full of admiring beautiful and unique quilts, sharing laughter with old and new friends, dropping a dollar or two at vendor booths, and most of all, celebrating all things quilt-related. We sponsor the show as a showcase for our work, and as a fund-raiser to support the programs of the Guild. (At last count we are over \$21,000 in profit after the additional deposits received in September.)

At the end of the day, though, I come back to the reason that I made my first quilt - the quilt that was made before I knew about Guilds, Workshops, Quilt Shows, or even rotary cutters. That first quilt was made for my daughter – it was something special for her to sleep under. That quilt went off to college and law school, and is still the quilt that she pulls out when she is sick on the couch surrounded by her own two children.

The Quilt Guilds of Collin County have received a special request on behalf of Samaritan Inn for 150 quilts for the children that they serve. Each quilt will be given to a child to be used while living at the facility which serves homeless families. The quilt belongs to that child to take with him or her when the family leaves Samaritan Inn. The request is for quilts appropriate for boys or for girls ranging in age from one to eighteen. The quilt size should be approximately 40” by 60” and it should be accompanied by a coordinating pillowcase. The quilt can be a very simple design. The goal is to collect 150 quilts by March 2016. This request is outside of our Guild’s normal efforts to make community service quilts, because we do not want to neglect the other deserving organizations we serve.

I am challenging each of you to cover a child by love. If you have questions, or need a suggestion for a simple pattern or simple quilting design, please let me know.

Pam Walsh

VISIT OUR WEBSITE AT: [www.qgplano.org](http://www.qgplano.org)

## GUILD OFFICERS & COMMITTEE CHAIRS

### OFFICERS

PRESIDENT	PAM WALSH
VP FINANCE	CAROL LONG
VP MEMBERSHIP	MARY SHANNON
VP PROGRAMS	PEGGY BURRELL DENA SMITH & LISA OWNBY
VP COMMUNITY SERVICE	LADAWN DALLEY
VP EDUCATION	PAM WINGATE
VP GUILD ACTIVITIES	DONNA PETRICK
VP MEDIA	LYNNE FRITSCHÉ
SECRETARY	PAM CARROLL
QUILT SHOW 2016	ROSE DAVIS

### COMMITTEE CHAIRS

BEE KEEPER	KATHY HOOK
CHRISTMAS STOCKINGS	LIZZIE BAILEY
DOOR PRIZES	LUT DEMEULDER
EDUCATION—CHILDREN	PAM WINGATE
EDUCATION—SENIORS	MINDY MYINT AURORA CHANCY
EDUCATION—ORGANIZATIONS	PAM WINGATE
GRAPHIC DESIGNS	ROSE-CLAIR FLETCHER
GUILD RETREAT	JULIE BROOKS SANDY BUTTINE & DONNA PETRICK
HISTORIAN	AURORA CHANCY
HOSPITALITY	MARTHA JONES
INVENTORY CONTROL	CAROL SURRELLS
NEWSLETTER EDITOR	PAT FOWLER
NINE PATCH	DEBBIE SEHER
SERVICE QUILTS	DONNA PETRICK & THE WEDNESDAY GIRLS
SHOW'N TELL	
SUNSHINE AND SHADOWS	PAT WIANT
TAQG	PAT WIANT
TREASURER	CAROL LONG
WEB E-MAIL	TINA CONNOLLY
WEB MASTER	LYNNE FRITSCHÉ



## DESTASH SALE

Thousands of yards of quilting cotton. Michael Miller, Robert Kaufman, Debbie Mumm, Northcott, Rowan, Hoffman, David, Alexander Henry, Timeless Treasures, Fabric Traditions, Blank, Marcus Brothers, Moda, and so much more. Lots of stripes, polka dots, checks and modern graphics. Hundreds of bold prints. Fruits, veggies, dogs, cats, butterflies, large and small florals, overall patterns. Whole and half bolts of Roc Lon muslin. Pellon fusible and sew-in interfacing. Yards and yards of full width WARM Poly Fleece.



Purse-making supplies and books—Dog gear hardware and webbing—Patterns—Hundreds of craft books—Quilting and sewing supplies.

Every piece of fabric is measured, bagged in clear plastic, and priced for easy viewing and sorting.

EVERYTHING AT LESS THAN 50% RETAIL PLUS QUANTITY DISCOUNTS OF 10%-30% STARTING AT \$150.

Thursday, Friday and Saturday, October 22-24, 9 a.m.—5 p.m.

7309 Dalewood Lane in Dallas near White Rock Lake

Questions—[cushgoods@gmail.com](mailto:cushgoods@gmail.com)  
Cash, credit and debit cards, checks with ID.

**BRING YOUR OWN BAGS**

### COMMON THREADS AD RATES

Half Page:	Quarter Page:	Business Card:
1 month = \$40	1 month = \$25	1 month = \$15
3 months = \$90	3 months = \$60	3 months = \$35

Please make ads in “jpg” files and email to Lynne Fritsche at [media@qgplano.org](mailto:media@qgplano.org).

## 2015 QUILT SHOW— CAROL LONG

### QUILT SHOW INCOME

Admission Revenue	17,409.00
Advance Ticket sales	4,435.00
Mini Quilt Auction Revenue	4,004.00
Other Quilt Show Income	0.00
Program Advertising Revenue	2,120.00
Raffle Quilt Revenue	3,074.00
Registration and Judging Fees	1,376.00
Show Meal tickets	642.00
Show Photography & CD's	9.62
Show Products Revenue	93.57
Sponsorship Revenue	6,450.00
Vendor Free Revenue	15,726.00
Wheel Chair Income	10.00
<b>TOTAL Quilt Show Income</b>	<b>55,349.19</b>

### QUILT SHOW EXPENSES

Admissions Expenses	0.00
Advertising and Publicity	450.00
Angels Exp-Glove/Apron Purchase	0.00
Awards Expenses	2,977.22
Door Prizes	0.00
Education Area Expenses	64.77
Facilities Catering Expenses	4,591.45
Facilities Deposit and Rent	12,510.15
Facility Security Expenses	730.00
Facility Setup Expense	1,900.00
Insurance	839.09
Judging Fees	500.00
Judging Lodging	0.00
Judging Meals	121.32
Judging Postage	0.00
Judging Travel	310.69
Mini Quilt Expense	75.00
Other Quilt Show Expense	274.84
Postage, Supplies	1,037.20
Printing	2,755.29
Raffle Quilt Expenses	55.00
Registration Expenses	176.09
Show Photography	0.00
Show Photography & CD's	0.00
Show Products Expense	300.00
Show Program Printing	2,120.68
Sign Printing	916.00
Storage & Transport	1,077.36
Vendor Expenses Postage, Supplies	31.47
Volunteer Incentives	638.43
Wheel Chair Rental	0.00
<b>TOTAL Quilt Show Expenses</b>	<b>34,452.05</b>

**OVERAL TOTAL** **20,897.14**

## AUGUST CASH FLOW COMPARISON—CAROL LONG

Bank Balance 66,684.01

### INFLOWS

Administrative: Bank Interest	1.92
Administrative: Service Pin Income	240.00
Membership: Membership Dues	1,145.00
Programs: Day Retreat	455.00
Programs: Workshop	785.00
Quilt Show: Admissions	17,361.00
Quilt Show: Advance Ticket Sales	4,435.00
Quilt Show: Mini Quilts	4,004.00
Quilt Show: Program Ad	910.00
Quilt Show: Raffle Ticket Sales	1,945.00
Quilt Show: Show Meal Tickets	425.00
Quilt Show: Show Products	36.95
Quilt Show: Sponsorship	950.00
Quilt Show: 2016 Sponsorship	1,500.00
Quilt Show: Vendor Booth	2,105.50
Quilt Show: Wheel Chair	10.00
Texas Sales Tax Collected	3.05

**TOTAL INFLOWS** **36,312.42**

### OUTFLOWS

Administrative: Bank Fees	25.60
Administrative: Insurance	2,339.00
Community Service: Service Quilts Supplies	67.50
Quilt Show: Awards	2,150.00
Quilt Show: Education Area	64.77
Quilt Show: Facility Catering	591.45
Quilt Show: Facility Deposits & Rent	60.15
Quilt Show: Facility Security	730.00
Quilt Show: Facility Set-Up	1,900.00
Quilt Show: Judging Fees	500.00
Quilt Show: Judging Meals	121.32
Quilt Show: Judging Travel	310.69
Quilt Show: Mini Quilt Expenses	75.00
Quilt Show: Printing	1,148.73
Quilt Show: Show Catalog Printing	2,120.68
Quilt Show: Storage & Transport	498.00
Quilt Show: Volunteer Expense	25.00

**TOTAL OUTFLOWS** **12,727.89**

Bank Balance 08/31/15 90,268.54

Bank Balances	<u>07/31/15</u>	<u>08/31/15</u>
Operating Account	42,534.80	66,117.41
Money Market Account	24,149.21	24,151.13
	66,684.01	90,268.54

## EDUCATION NEWS—PAM WINGATE

### **Calling All Junior Quilters! Free Beginning Quilting Lessons**

There's still time to sign up for *free* quilting classes – open to junior quilters ages 8-12. Classes will start, Saturday, October 10<sup>th</sup> and will meet the 2<sup>nd</sup> Saturday each month at *Sew Let's Quilt It* located at 7989 Belt Line Rd # 170, Dallas, TX 75248 (NW corner of Belt Line Rd & Coit Rd.). We'll have fun each month learning a different technique and complete a sampler quilt that can be displayed at next year's Quilt Plano. If you know of someone interested in signing up, or if you're interested in teaching or helping out with the classes, please contact Pam Wingate at [pam.wingate@tx.rr.com](mailto:pam.wingate@tx.rr.com).

### **Volunteers Still Needed for the Plano International Festival Saturday, October 17<sup>th</sup>**

We participate in the Festival every year to teach children how to make crayon squares and redwork squares for children's donation quilts. We usually see over 150 children throughout the day. The Festival will be held from 11:00 a.m. to 5:00 p.m. in Haggard Park on 15<sup>th</sup> Street just West of Historic Downtown Plano. Thank you to those who have already signed up, but we still need volunteers, especially in the early afternoon, so contact Pam Wingate at [pam.wingate@tx.rr.com](mailto:pam.wingate@tx.rr.com) and come join the fun!

## COMMUNITY SERVICE— LADAWN DALLEY

Wow, Ladies! So many completed quilts were turned in at the meeting that I am still in the process of washing, labeling, and counting them, so I can deliver them next week! Thank you so much for all your hard work!

Here's a quick run-down of our numbers for the year: as of right now, we have 252 quilt tops that are ready to be sandwiched and quilted. We have donated a total of about 230 quilts to our various organizations. We have also donated about 25 crocheted afghans. We've made and donated about 200 little cuddles for Children's hospital at Legacy. We've finished the edges on 15 of the knit baby wraps for the church. We've provided the PISD Student Parent program with

(Cont'd Page 7)

## Happiness Is...QUILTING!

217 N. Kentucky, McKinney, TX 75069

972-542-8839

Shop Hours: Mon-Sat 10-5 & Thurs 10-7

Don't miss our  
next Alley Sale!

Saturday, October 10  
10 am – 3 pm

Sign up for a booth or  
Come find a bargain!

Did you know  
we are now an  
authorized Pfaff  
dealer?

"The Happiest Little Quilt Shop in Texas!"

[www.HappinessIsQuilting.com](http://www.HappinessIsQuilting.com)

[info@HappinessIsQuilting.com](mailto:info@HappinessIsQuilting.com)

## DO IT YOURSELF ROUND ROBIN MYSTERY—LINDA NEAL

### **Border #5: Embellishment!!**

The Do-It-Yourself Round Robin Mystery border #5 was revealed at the guild meeting. Embellishment! You can make any type of border that works for your quilt and add embellishment to it. I realize that most embellishments are added after the top is quilted, but for now you can just design, construct, and add the border to your quilt top. ANY border style can be used. ANY type of embellishment can be used- you may even use more than 1 embellishment. Remember, the amount of embellishment is up to you! You have 2 months to complete the sewn portion of you border. Go to the guild website for more information on border #5.

For new members: it is not too late to join the border challenge! All of the information is up on the website to get started. Donna Petrick will be taking over the position of VP of guild activities. But, I will continue as a "consultant" as we finish this guild challenge. Please continue to bring your projects to the guild meeting to inspire others.



**2016 GUILD RETREAT—  
DONNA PETRICK**

**2016 Guild Retreat  
February 18<sup>th</sup>, 19<sup>th</sup>, 20<sup>th</sup>& 21<sup>st</sup>, 2016**

The board has agreed to a change of location for the February 2016 guild retreat. We were contacted by the Hilton Garden Inn in Denison about bringing our retreat to their facility. Julie Brooks and Sandy Buttine, retreat committee, went to see the facility to find out the particulars. After negotiations were complete, we agreed to move to the Hilton. That puts us back in a hotel, meals to be served, and the ball room for our use. Prices are the same as before—\$275.00 per person for a double room, \$425.00 for a single. The drive is approximately 1 hour from Plano. The hotel is located on Hwy 75 between Sherman and Denison. Google Hilton Garden Inn Denison TX to get a look at the facility. All of the retreat information will be posted on our web site as soon as we can get it together.

We currently have 21 people signed up and need to have at least 30 people to be able to hold our retreat. Current payments are posted on the web site, along with roommate assignments that have been requested. You may mail in a \$50 deposit and make payments between now and January 2016 or pay the entire amount now. Please plan to join us for a fun time and a chance to meet more people from the guild. Mail your payment to Donna Petrick, 3816 Dutton Dr. Plano, TX 75023.

Next month we will have more information about the tables and chairs that will be provided. We do know that we can use the walls for design walls. The guild now owns two big board ironing boards along with table risers to set up taller cutting tables which will come to retreat. The hotel is also allowing us to provide our own cookies and snacks instead of providing them at a price. So Sandy will be cooking some goodies, but this time she gets to enjoy her retreat instead of cooking so much of the time. She will be working with the chef at the hotel about our food choices. Send me your questions so that we may address them with the hotel.



**DAY RETREAT OPPORTUNITY—  
DONNA PETRICK**

October 9<sup>th</sup>, 10<sup>th</sup>& 11<sup>th</sup>, 2015

We again will have a day retreat in conjunction with the guild workshop in October at the Dallas Gamers building. Workshop members can stay and sew after class at no additional charge. We have room for 12 more people. These 12 will need to pay \$35.00 for the three days. We do have to remove our sewing equipment on Friday afternoon, the 9<sup>th</sup>, and be out of the building by 4:30 that afternoon as another group had rented the space before we booked our workshop. However, you may leave your things in the building on Saturday night to come back and sew on Sunday.

The building is at 930 W Parker Rd, Ste.530, Plano, TX 75075. We will open at 8:30 a.m. for set up for the workshop which begins at 9:00 a.m. All of us must leave by 4:30 on Friday. Saturday, we will again open at 8:30 for set up. Workshop will be over around 3:30 or 4:00 p.m, but you may sew until 9:00 p.m. We will decide Sunday starting hours on Saturday, but will finish the day at 4:00 p.m. Please contact me at [petrickdl@outlook.com](mailto:petrickdl@outlook.com) to let me know that you will take advantage of the retreat sewing time. It's a fun and productive time.

## UPCOMING PROGRAMS—PEGGY BURRELL, DENA SMITH & LISA OWNBY

October brings back Brenda Jeschke. Brenda has developed a new program for us. Several years ago, Brenda caught the machine embroidery bug. She has evolved into one of the best teachers of home machine embroidery to be found. She has a very common sense approach backed up by experience with multiple brands of machines. It will be our treat to view samples of quilts and tops and take home plenty of tips. In the workshop you will learn: piecing in the hoop, quilting in the hoop, quilting a pieced block, setting together quilted and embroidered blocks, using cutting systems to cut applique pieces, and more. This workshop will be held at the Dallas Games Center, so additional sewing time is available on Saturday and Sunday.



two books [\*Simply Amazing Spiral Quilts\*](#) and [\*Magnificent Spiral Mandala Quilts\*](#) have become quilting classics. The two workshops are full. Please see the website and the Programs display at the October meeting for more information.



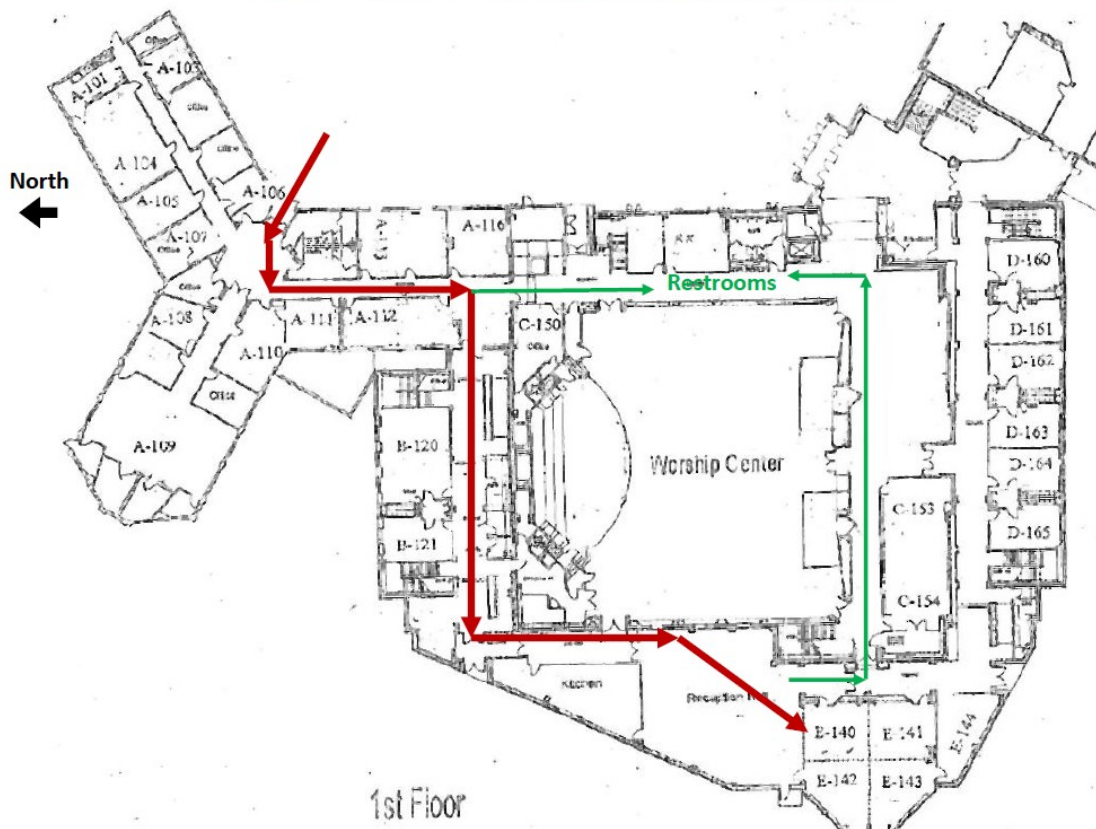
All the classes with Brenda and RaNae are currently full. We are starting a waiting list, so if you are interested in taking one of their classes, you will be contacted if we have a cancellation.

Please see map for new route into church for all meetings and classes. This is for security and we must adhere. Also do not prop doors open for loading or unloading.

RaNae Merrill will be our speaker in November. RaNae Merrill is an award-winning quilter, author and teacher. Her unique "spiral" quilts have appeared in national shows and magazines, and her

Lisa Ownby, Dena Smith, and Peggy Burrell are co-chairing Programs. If you have any requests for speakers or workshops, please let them know by emailing [programs@gqplano.org](mailto:programs@gqplano.org)

### QGP Class - Parkway Hills Baptist Church



## MEMBERSHIP NEWS—DONNA PETRICK

I'm so excited about the number of new members that have joined us this past year. We gained 21 just at the quilt show. Please make a point to meet these people and let them know how much we appreciate them joining with us to make QGP a top notch guild. And now that John Worley is a new member, he will be around most meetings and will take your picture to add to the member roster on the web site. It helps all of us to be able to put names and faces together. Please take advantage of his generosity to take the pictures to get your picture posted.

Mary Shannon is the new VP of Membership, but had a wonderful retreat to attend this week. So I'm doing the newsletter one last time. It's been a pleasure to be your membership contact for the past two years. I hope several of you will volunteer to help Mary and Martha Jones with the hospitality portion of membership. We need members to take new members and visitors around the meeting area to explain our different functions.

Here is a list of the new members from this past year, starting with the newest first. Their information has been posted on the web site. Please find them and make them feel welcome to be a member.

### September

Terri Anderman returning former member  
Rachel Dalley — John Worley

### August

Lizzie Bailey — Pamela Carroll — Ginny Cherry  
— Joanne Condi — Joan Cooper  
Pat Dashner — Victoria Dean — Martha Diehl  
Peggy Dull — Mary Jo and Jon Ferril  
Judy Flores — Janet Gould — Emma Guillen  
Julia Haun — Sara Lindsay — Marie McDowell  
Peggy O'Neal — Catherine Picou  
Teresa Schwarz — Katherine Simpson  
Mary Skoritowski — Virginia Slater  
Texas Quilt Museum, LaGrange TX  
Pat Walker — Anna Winnet

### July

Susan Krauss — Jean Rosell — Joanne Smith

### June

Leigh Knox — Maggie Hetzel — Judy Rose  
Teresa Woodruff

### April

Susan Norton — Dean Smith — Denise Green  
Valerie Hubbard — Mistey Jones — Pat Young

### February

Jayne Eshbaugh — Susan Rentz

### January

Hazel Bailey — Linda Dansereau

### December 2014

Kate Premeaux

### November 2014

Peggy Burrell — Valerie Pearson

## OCTOBER BIRTHDAYS

Jo Ann Langloys	10/01
Enriqueta Benavides	10/01
Norlyn Quinn	10/06
Karen G. Wood	10/09
Mistey Jones	10/11
Marie McDowell	10/12
Barbara Fletcher	10/15
Monica Hendewerk	10/17
Carroll Thune	10/17
Rachel Carithers	10/18
Debbie Seher	10/18
Sandra Kranick	10/19
Emma Guillen	10/20
Suzanne Larsen	10/20
Ileana Salzer	10/21
Kaye Ammerman	10/28
Linda Castellano	10/28
Sheila Dewey	10/31
Sarah Lee	10/31
Sandra Vanzant	10/31

Community Service Cont'd From Page 4)

6 quilts and numerous baby supplies. We were able to donate about 1000 stockings to Soldier's Angels; and lastly, we donated about 40 flannel receiving blankets and 10 "taggies" to the Plano Children's Clinic. I love that we are able to do so much!

And here's a challenge for us: the Samaritan Inn in McKinney needs 75 quilts for girls and 75 quilts for boys. Our past president, M.J., has offered a challenge to several local quilt guilds to see which one can donate the most quilts by March 31. The quilts need to be 40x60 inches, and if you want to make a matching pillowcase that would be great, too!



## SEPTEMBER GENERAL MEETING MINUTES—MARTY CROUCH

Guild President Dolores Williams called the meeting to order at 6:45 p.m. The minutes of the July meeting were approved as written. The treasurer's report will be filed for review.

Dolores thanked the outgoing board members for their service. MJ Fielek represented the nominating committee and introduced the slate of officers for the 2015-2016 year and asked if there were further nominations from the floor. No other nominations were made. Tina Connolly made a motion to accept the slate of officers as presented. Ileana Salzer seconded the motion. The motion passed.

### 2015-2016 slate of officers

President—Pam Walsh  
VP Finance—Carol Long  
VP Membership—Mary Shannon  
VP Programs—Lisa Ownby, Peggy Burrell,  
Dena Smith  
VP Education—Pam Wingate  
VP Community Service—LaDawn Dalley  
VP Guild Activities—Donna Petrick  
VP Media—Lynne Fritsche  
Secretary—Pam Carroll  
Quilt Show 2016 Chair—Rose Davis

### Community Service—La Dawn Dalley announced:

The Saturday community service sew day would be held on September 19 at the Olde Craft Store in Carrollton from 10 a.m. to 1:30 p.m.

Lizzie Bailey is the new chairperson for the Christmas stocking project benefiting Soldiers' Angels

A new challenge was issued to benefit the Samaritan Inn. Members are requested to donate completed quilts (at least 40 by 60 inch) with pillowcases for the new Samaritan Inn facility that will open on March 31, 2016. MJ Fielek announced that the challenge originated from the McKinney guild, was extended to all Collin County guilds, and that the Samaritan Inn needed 150 quilts. MJ encouraged members to be generous.

200+ quilts were donated to our charities during the 2014-2015 year.

Members were reminded to return finished or unfinished Christmas stockings.

Education - Pam Wingate requested volunteers for 2 hour shifts at the Plano International Festival to be held on October 17 at Haggard Park. She announced that the Junior Quilter class would

begin the second Saturday in October and be held at Sew Lets Quilt It in Richardson.

Quilt Show—Pam Walsh announced that 250 quilts were entered in the show and that attendance had increased by 100 people over the 2014 show. Final financial results are pending, but Pam estimated a profit between \$19,000 and \$20,000.

Guild Activities—Linda Neal asked members to show round robin quilts in progress and announced that border 5 of the round robin quilt should include embellishment.

9 patch—Debbie Seher reminded members to contribute 9-patch squares to be sent to members who move away from the guild.

Membership—Donna Petrick announced that 83 were present and recognized new members and visitors. Ten door prizes were awarded. Donna presented Dolores Williams with a President's quilt in honor of her service as President.

Retreats—Donna Petrick announced that the February 18-21, 2016 retreat has been moved to the Hilton Garden Inn in Denison. The \$275 cost for a double room and food is the same as had been previously announced for the Mitchell RV Park. Single room cost is \$425. The guild needs to guarantee 30 attendees. Donna told members that they could make a \$50 deposit with the total due in January. Donna also announced that there was room for 13 day retreaters on October 9-11 to be held at the Dallas Games Marathon in Plano.

Mini-quilts—Tina Connolly announced that 82 mini quilts were sold for a total of \$4,700. She thanked members for their donations and introduced Valerie Salter as the new chairman for mini-quilts.

Programs—Sherry Worley announced that the price increase for programs was in effect and announced that all 2015 workshops were sold out.

Show and Tell—Donna Petrick displayed the 30th anniversary quilt made by the Wednesday Girls small group. Debbie Skorepa showed Texas table runners she is making for Christmas gifts. Ileana Salzer showed 4 quilts:

(Cont'd on Page 9)



## SEPTEMBER BOARD MEETING MINUTES—MARTY CROUCH

Dolores Williams called the meeting to order at 6:35 p.m. and welcomed incoming board members to the meeting. Dolores led a discussion on the process to introduce and vote on the incoming board at the general meeting. The board confirmed that, unless there were nominations from the floor, a verbal vote was sufficient to approve the slate of officers. Dolores advised incoming board members that it was their responsibility to confirm that committee heads would continue in their current roles.

### Items discussed:

Education—Pam Wingate announced that she will be requesting volunteers to work at the Plano International Festival on October 17 and that she was looking for a new instructor for the Junior Quilters.

Membership—Donna Petrick announced that 21 new members joined the guild at the quilt show and that we now have approximately 220 members.

Retreats—Donna Petrick recommended that the February retreat be moved to the Hilton Garden Inn in Denison. The \$275 cost for a double room and food is the same as had been previously announced for the Mitchell RV Park. The board concurred with the recommendation. Donna announced that there was room for 13 day retreat attendees at the October workshop. Sherry Worley made a motion that the fees for day retreats held in conjunction with workshops be used to offset workshop costs. Pam Walsh seconded the motion. The motion passed.

Programs—Sherry Worley announced that 2015 workshops are sold out.

Community Service—LaDawn Dalley announced that Lizzie Bailey had agreed to chair the Soldiers' Angels Christmas stocking project. There was a discussion on whether to limit the number of community service challenges that request completed quilts (i.e. Birthday Quilts and the Samaritan Inn challenge). It was decided that the VP of Community Service would be responsible for announcing and explaining all challenges.

Communication—Pam Walsh volunteered to create a handout for new members to explain regular guild activities.

Guild Activities—Linda Neal announced that she would be presenting border 5 of the round robin challenge at the September guild meeting, with border 6 presented in November. The challenge will continue through March or April of 2016 to allow time to quilt and bind the border quilt.

Quilt Show—Pam Walsh announced that attendance at the show increased by 100 attendees and that vendors had reported successful sales. Final financial results are pending, but Pam estimated a profit between \$19,000 and \$20,000.

TAQG—Pat Wiant announced upcoming TAQG meetings on September 29 and November 17. She requested that the VP Membership attend the September meeting and the VP Programs attend the November meeting.

Board Meeting Date—Pam Walsh reminded incoming board members that the regular meeting date is on Monday, the week prior to the guild meeting.

The meeting adjourned at 7:40 p.m.

Those in attendance:

Dolores Williams, Pam Wingate, Donna Petrick, Sherry Worley, LaDawn Dalley, Linda Neal, Lynne Fritsche, Pam Walsh, Marty Crouch, Pat Wiant, Tina Connolly, Mary Shannon, Lisa Ownby, Dena Smith, Pam Carroll, Lizzie Bailey.

(Guild Meeting Minutes Cont'd from Page 8)

Christmas Race, Disappearing Nine Patch, Metro Twist and Asian Twisted Blossom.

The meeting adjourned at 7:30 pm. Sherry Worley introduced the speaker, Mary Lou Jones, who presented a program about Kansas City Star Quilts.