

Quilters Guild of Plano, Inc.

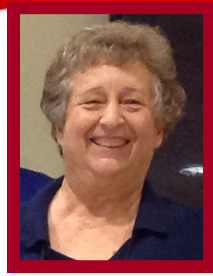


December 2014

Volume 32, Issue 12



The President Says ...



Hi all,

It is sad that we could not get the church to meet in December, but on the other hand, it will give us more time with our families around the holidays.

In November we tried starting the meeting 15 minutes early to allow the board time to talk and still give our speaker time to do her talk, show her quilts, and sell goodies. We were out of the building on time without rushing like we normally do. We will keep the 6:45 start time for now and see how things go. Hopefully the 15 minutes won't impact too many people.

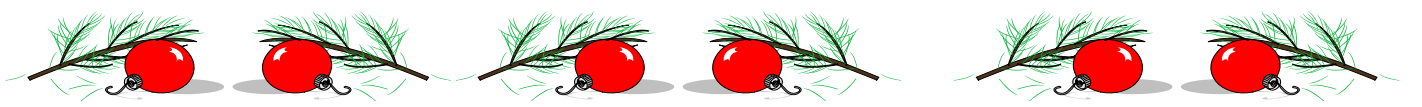
Be sure to check out our new website at qgplano.org. The original site is still up and running, but we are in the process of changing to the new site. Right now the main things for you to notice on the new website are the directory and also the hours sections. The directory has been updated and will be the only directory we will have for the future. We will not be printing directory pages this year.

At this time you can still email Julie about your hours, but starting in January, all hours will be reported by you at our new website. We have instructions at the meetings. We will help you with your entries, though once you log onto the website, it is very easy to enter your hours. If you do have a problem, be sure to contact a board member. We want everyone to be comfortable entering their hours.

Have a happy and safe holiday season.
Dolores

INSIDE THIS ISSUE

- The President Says1
- Inside This Issue1
- Guild Officers and
 Committee Chairs 2
- UFO Challenge2
- AD Rates2
- Upcoming Programs3
- Quilt Plano 2015 4
- Bee Keeper 4
- Programs Continued 4
- Retreat 20155
- Sapphire Quilting AD 5
- December Birthdays5
- November Board Meeting Min. . .6
- Community Service 6
- Quilt Plano 2015 Save the Date . 7
- AD Rates7
- Happiness is Quilting AD 7
- Membership 7
- November General Meeting Min. 8
- October Cash Flow9
- Quilts by Becky Goldsmith 9
- Plum Good Quilting AD9
- Year End Financial Report 10



VISIT OUR WEBSITE AT: www.qgplano.org

GUILD OFFICERS AND COMMITTEE CHAIRS

OFFICERS

PRESIDENT	DOLORES WILLIAMS
VP FINANCE	MJ FIELEK
VP MEMBERSHIP	DONNA PETRICK & KEMBERLY WILSHIRE
VP PROGRAMS	KAYE DUNN & SHERRY WORLEY
VP COMMUNITY SERVICE	LADAWN DALLEY
VP EDUCATION	PAM WINGATE
VP GUILD ACTIVITIES	LINDA NEAL
VP MEDIA	LYNNE FRITSCHÉ
SECRETARY	LESLIE LEATHERS & MARTY CROUCH
QUILT SHOW 2014	PAM WALSH

COMMITTEE CHAIRS

BEE KEEPER	KATHY HOOK
DOOR PRIZES	LUT DEMEULDER
EDUCATION—CHILDREN	LIZABETH DOUGHERTY & MARY BISHOP
EDUCATION—HIGH SCHOOL/COLLEGE	LADAWN DALLEY
EDUCATION—SENIORS	MINDY MYINT
EDUCATION—ORGANIZATIONS	SUZY BOYLE
GRAPHIC DESIGNS	ROSE-CLAIR FLETCHER
HISTORIAN	AURORA CHANCY
HOSPITALITY	KATHY HOOK
INVENTORY CONTROL	CAROL SURRELLS
NEWSLETTER EDITOR	PAT FOWLER
NINE PATCH	DEBBIE SEHER
RETREAT 2015	JULIE BROOKS, EMILY ARMSTRONG & MICKIE WARRINGTON
SERVICE QUILTS	KAREN CHRISTOFFER WEDNESDAY GIRLS
SHOW'N TELL	KATHY HOOK
STOCKING PROJECT	CAROL THUNE & "THE NIFTY NEEDLERS"
SUNSHINE AND SHADOWS	PAT WIANT
TAQG	PAT WIANT
TREASURER	CAROL LONG
WEB E-MAIL	TINA CONNOLLY
WEB MASTER	LYNNE FRITSCHÉ

UFO CHALLENGE— LINDA NEAL

The UFO challenge is winding down. Many people are getting close or have completed their UFO lists. It has been fun watching people meet their UFO challenge goals. This month's winner was Aurora Chancy. She received a gift certificate from Sew Let's Quilt It. We had 10 UFO's completed this month.

Since we are not having a December guild meeting, you will have an extra month to complete your UFO's. In January we will draw for the December UFO winner. We will then announce ALL of the monthly UFO winners, and from that list we will draw for the Queen of the UFO's. The UFO Queen will be crowned for all to cheer. It is going to be lots of fun. I, however, will be at retreat in Carlsbad, California. MJ Fielek will be taking over as the master of ceremonies. Thanks MJ!!!

Guild Activity for 2015:

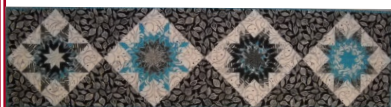
The guild activity for 2015 will be a Do-It-Yourself Round Robin Mystery. It is going to be a fun and inspiring project. To participate you need to find an orphan block you have already made or make a block. The block is going to be the center of the medallion style quilt. Please review the information sheet or guild website for hints on picking your center block. It is a Do-It-Yourself project. This means you will only work on your own project. It's a mystery because you don't know what style of border you are going to add every other month for a total of 6 borders. Starting in January, I will announce the border style and give examples. I will then repeat the presentation in February. I will do this for the entire year. Each border will be able to be done by hand or machine—your choice. It is meant to be fun and inspire creativity! I will also have written instructions on the guild webpage if you were not able to attend the guild meeting that month. It is going to be fun as we watch everyone's block grow into a wall hanging or quilt as the year progresses. If you have any questions, please email me at:

lindanealmck@hotmail.com

UPCOMING PROGRAMS—SHERRY WORLEY AND KAYE DUNN

Taking classes from Gail Garber was a great opportunity to expand our quilting expertise! We hope that everyone enjoyed the lecture and workshops. Kaye and I believe that the workshops, offered by the Quilters Guild of Plano, are excellent ways to gain knowledge, make better quilts and support our Guild at the same time. Please consider joining us at a workshop soon!

There will be no meeting in December. The Birthday Quilt Challenge that we are promoting with Community Service will end in January. December Birthday Quilts may be turned in at that time. We will also have the prize drawing for the members who donated a Birthday Quilt to Community Service. If you completed and turned in a Birthday Quilt you are entered for a chance at winning one of several great prizes. If you have a birthday in December, just make a quilt of any size and bring it in January to participate.



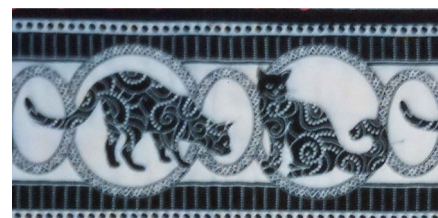
Winnie Fleming will present Borders Bonanza on January 8th. This lecture includes 40 or more quilts with different types of borders. The finale is a group of award winning



Round Robin Quilts, we all know how difficult those can be to do well! Winnie will be teaching her Strip pieced Lone Star

on Friday the 9th. The Borders Bonanza Workshop, offered on January 10th is an all day workshop with a little prep work of a center block and pieces to be cut for a borders wall hanging.

The wall hanging consists of a center block set on point, followed by 2 pieced borders. You will learn how to cut and sew a



perfect mitered border. You will also learn a formula that will make a pieced border fit the quilt. Community Service has several blocks that were donated that would serve as a great center starter. These blocks are available for a minimal charge. Please contact Donna Petrick for more information about the blocks for sale.

(Continued on Page 4)

Workshops Fees: \$40/day for members,
\$50/day for non-members

Hours: 8:30 a.m.—3:00 p.m.
doors open at 8:00 for setup

Location: Parkway Hills Baptist Church
2700 Dallas Parkway, Plano, Texas 75093

Member Bonus!!

Advance Registration and Multi-day Discounts

Prepayment of registrations **received 35 days** prior to the scheduled event, entitles members to take a \$5.00 discount with each prepaid workshop. If you take both days offered by the instructor you may take an additional \$5.00 discount. Members can take two days of classes from a national teacher for \$65.00. See the guild website at www.quiltersguildofplano.org and go to the *Upcoming Events* page for more information. Fees are refundable only in the event the speaker cancels her appearance. Questions may be directed to the

workshop coordinator. Refer to our website for current email.

Name: _____

Address: _____

City and Zip: _____

Phone: _____

Email: _____

Enclose a self-addressed stamped envelope to receive the supply lists via USPS. Supply lists may also be printed from the website. Your telephone number and email are particularly important so we can reach you in the event of any last minute changes.

TOTAL AMOUNT ENCLOSED: _____

Bring Completed Form to a Meeting, or mail to

Kaye Dunn
4833 N. Meadow Ridge Circle
McKinney, TX 75070

QUILT PLANO 2015—

PAM WALSH

There are many reasons why the Guild produces a Quilt Show each year. Yes, it is our major source of revenue that is used to contract high quality speakers and teachers and to support our community service and education endeavors. **But it is also the way we spread our love of quilting.** Having YOUR quilt hang in the show is a message to beginning or would-be quilters that they too could do this. Not all quilts are made to be show-stoppers. Many are made to provide comfort to loved ones, commemorate a special life event, or decorate a niche in a home. Each type of quilt has a different purpose, and each type of these quilts should be represented in our Quilt Show. If we only hung “Best of Show” Quilts in our show, then the art of quilting would die. Every new quilter would give up! Every “master” quilter was at some point a “beginning” quilter. The first quilt that I ever entered in a show, I entered in the “Unjudged” category. It seemed more painless, and I still got to round that corner at the show, and see MY quilt hanging. But by continuing to enter quilts, I have personally grown in my quilting journey. I have learned from my critiques and have been inspired by the entries of my fellow quilters.

I challenge each one of our members to be planning to enter a quilt in Quilt Plano 2015 to be held August 14th and 15th. Registration information and entry forms will be available February 1st, 2015, with entry forms due by June 11, 2015. If you have questions prior to then, please contact me at pam.walsh92@gmail.com or our Registration Chair, Lynne Fritsche at lynnefritsche@verizon.net.



The Quilting Bee

Kathy Hook



We are busy people in the Plano Quilt Guild. One of the most precious elements in our lives is TIME. We never seem to have enough time for ourselves and for our passions. I know some of you feel like joining a Bee is just another obligation that will steal some of that time. However, I am finding out that the people in bees appreciate having a few kindred spirits. Joining a Bee revitalizes your quilting and feeds your soul. The friends you make will listen, encourage, and care. If you are ready to be part of a small group and to make new friends, please contact me at: beekeeper@quiltersguildofplano.org.



(Continued From Page 3)

North Texas quilter and author Becky Goldsmith joins us in February. She is part of the duo that is Piece O' Cake. The Guild lecture will be, “It is Not a Quilt Until it's Quilted”. “Spring Wheel,” a paper foundation pattern, is the workshop offered on February 13th. If you haven't done paper foundation for a while, or are new to the technique, give it a try. This is a great pattern and can be beautiful in many color palettes. Becky does not usually offer this pattern as a workshop, so this may be your only opportunity. The pattern is available as an e-pattern from www.pieceocake.com. Select patterns then scroll down. Saturday brings us “Backyard Birds”. This is a happy pattern, especially when done in Becky's signature bright colors. “Backyard Birds” gives a chance to appliqué the Piece O' Cake Way! Sign up early to receive the discount on the class fee! Pictures of her quilts can be found on page 9.

Please consider taking the job of Programs in 2016. You have a great opportunity to shadow Kaye and I as we work through this year and would have input about the speakers that we hire for 2016. This is a great job for 2 or 3 friends to share! Contact Kaye Dunn or Sherry Worley for more information.

RETREAT 2015—
YOUR RETREAT COMMITTEE

Are you ready to relax and sew and sew and learn and have fun? Our annual retreat provides all of that and more! There will be daily games and a “special project” (last year’s winner won an awesome Guterman thread chest!). There will be sewing time and social time ... time to share techniques with your neighbors, meet people you don’t yet know, form friendships, and just have a great time. What a wonderful Christmas present this would be ... don’t hesitate to let one of us know if you’d like us to give someone this idea for you!

Christmas is just around the corner and February will be here before you know it. Mark your calendar for **February 19th—22nd at Mitchell Resort in Perrin, TX.** That’s 4 days of quilting fun and frolics for \$275 including room accommodations, food, and a spacious sewing area. There are still some spots remaining so let us know soon if you plan to join the fun. Payments can be arranged through mid-January but we need to know how many plan to be there so we can make the best food choices. Coffee and tea will be available throughout the day this year.

Clean, quiet, and FUN, FUN, FUN!

1) *Happiness is Quilting* will be our onsite vendor at Retreat for those necessities you forgot to bring, plus some you decide you cannot live without! Laura Kay Houser is happy to receive requests for items you’d like to see as part of the selection.

2) There are new WIFI connections at the resort this year to let you keep in touch with family and friends as well as let you catch up on your favorite shows and email.

3) A massage therapist will be onsite at a day to be announced for those whose muscles have tightened from all of the sewing. Of course, Emily, our activities coordinator, will also encourage those occasional stretches to keep us limber and ready to sew some more!

4) There is a golf course on the property for those who would like a brisk morning walk to start the day or an exercise break during the day.

There is no guild meeting in December, so contact Retreat@quiltersguildofplano.org to confirm your reservation or ask a question. Payments should be made to “QGP Retreat” and mailed to Mickie Warrington, 2801 Cobre Valle Lane, Plano, TX 75023. We’d love to see you there!



DECEMBER BIRTHDAYS—
DONNA PETRICK

Mary Shannon	12/05
Jill Isakson	12/07
Joan Bolesworth	12/08
Peggy Burrell	12/08
Kemberly Wilshire	12/10
Emily Armstrong	12/11
Lyn Jennings	12/12
Paula Washler	12/14
Elizabeth Waltrip	12/16
Judy Williamson	12/19
Mickie Warrington	12/20
Tisha Copeand	12/21
Aurora Chancy	12/22
Sharon Schenke	12/23
Kaye Dunn	12/27
Juliana Jordan	12/28
Shirley Wolfe	12/28

NOVEMBER BOARD MEETING
MINUTES—MARTY CROUCH

Dolores Williams called the meeting to order at 6:30 p.m. Dolores asked for input on whether we should cancel the December board meeting since there would be no general meeting. It was agreed that the Board meeting would be cancelled.

ITEMS DISCUSSED:

Education—Pam Wingate announced that she would be presenting a program on small handwork to the St Mark's women's group on December 4.

Membership—Donna Petrick announced that we now have 150 paid members for the 2014-2015 year.

Programs—Kaye Dunn provided an update on the November workshop registration. The January 2015 program will be a Border Bonanza lecture by Winnie Fleming. The February program will be Becky Goldsmith.

Guild Activities—Linda Neal asked for volunteers to assist her in conducting the UFO drawing and explaining the Round Robin activity at the January general meeting since she will be out of town.

Hours Reporting—Julie Schaefer announced that she will add all hours submitted by paper and those inputted on the website unless she is notified that a member has submitted hours twice.

Budget—Carol Long led a discussion of the proposed budget and noted proposed changes.

Quilt Show—Pam Walsh asked for input on whether to create bookmarks for the 2015 show and programs. The Board concurred that the bookmarks were an effective marketing tool.

TAQG—Pat Wiant announced she will attend the next meeting on November 18.

The meeting adjourned at 7:30 p.m.

Those in attendance:

Kaye Ammerman	Donna Petrick
Marty Crouch	Julie Schaefer
LaDawn Dalley	Pam Walsh
Kaye Dunn	Pat Wiant
MJ Fielek	Dolores Williams
Lynne Fritsche	Pam Wingate
Carol Long	Sherry Worley
Linda Neal	

COMMUNITY SERVICE—
LADAWN DALLEY

Thank you all for helping with all our community service needs. The Christmas stockings have been delivered to Soldier's Angels, who will fill them and distribute them at the VA hospital. I think the total was about 800. Next month, (January), we will be starting again! The third Friday we will be meeting at Delores Williams' home in Princeton to press and cut fabric, make kits, and maybe even do some sewing. If you did not get a chance to sign up at The November meeting, you'll get another chance in January, or you can just show up!

Another organization we donate to twice a year is the PISD Student-Age Parent program. At Christmas time and again at graduation, they have a party for the students. Part of the party is a time when they can spend "money" they have earned, (by working, getting good grades, etc), on baby items. This week, Terri Mendelow and I delivered a box full of your donations of baby supplies, plus four flannel receiving blankets and two flannel rag quilts for their Christmas party.

By the time you receive this newsletter, I will also have delivered 35 quilts and about 15 afghans to the Collin County Children's Advocacy Center, My Friend's Place, and the Rape Crisis Center.

In addition, we have added The Plano Children's Medical Clinic to our donation list. This is a clinic in downtown Plano that serves low income and non-insured children in the area. We will be giving them the flannel receiving blankets that I used to take down to Parkland Hospital. I have about 25 blankets to take to them. If any of you don't mind working with flannel, I have lots to share! The receiving blankets are fast and easy to put together. If you are interested, please give me a call!

The next community sew day is December 9th. We will be having our annual holiday lunch. Contact Karen Christoffer for more details.

Also, remember to log your volunteer hours on the website!



Quilt Plano 2015 SAVE THE DATE!

Friday-Saturday
August 14-15th, 2015
Plano Centre



COMMON THREADS AD RATES

Half Page:	Quarter Page:	Business Card:
1 month = \$40	1 month = \$25	1 month = \$15
3 months = \$90	3 months = \$60	3 months = \$35

Please make ads in "jpg" files and email to Lynne Fritsche at media@quiltersguildofplano.org.

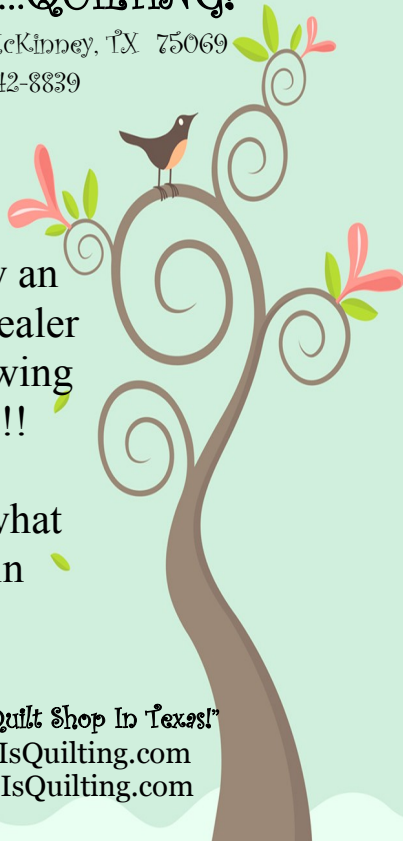
Happiness Is...QUILTING!

217 N. Kentucky, McKinney, TX 75069
972-542-8839

We are now an
authorized dealer
for Pfaff Sewing
Machines!!

Come see what
we have in
stock!

The Happiest Little Quilt Shop In Texas!
www.HappinessIsQuilting.com
info@HappinessIsQuilting.com



MEMBERSHIP NEWS—

DONNA PETRICK

Time is running out to renew your membership for 2015 and remain on the roster on the new web site. I have emailed all those who have not renewed. Some of the emails were from the new web site. Please check your spam or unknown file to make sure you are receiving the emails.

Unfortunately, I cannot be at the January meeting but I hope to have your anniversary pins there for you to pick up. (If you are entering a quilt in the Dallas show, be sure to get your entry form to me before January 8th. I will be at the Dallas meeting that night getting the last entries)

I will print the membership cards for all received these next two months to add to the ones not yet picked up. Please check the membership table at the January meeting to get your membership cards when you get your door prize ticket.

We had 3 new members join at the last meeting and I've received one more in the mail. Those are listed below along with the ones from last month that I forgot to list. Please take the time to meet these ladies and make them welcome.

October New Members

Denny Lay (doesn't want her information posted)

Donna Stogin Phone: 214-669-2702
2513 Creswick Dr Plano TX 75093
Email: donnastogin@yahoo.com

Ki Watkins Phone: 214-536-2701
3213 Big Oaks Dr. Garland TX 75044
Email: maureenwatkins10@yahoo.com

November New Members

Peggy Burrell Phone: 901-210-4690
17910 Windflower, #2004, Dallas TX 75252
Email: pegburrell@yahoo.com

Valerie Pearson
(did not complete form, I have no information)

Kathy Scott Phone: 309-310-236
1612 Nestledown Dr Allen TX 75002
Email: sewcrafty27@hotmail.com

Terri Shepard Phone: 214-208-9686
1152 Indian River Dr, # 802, Carrollton TX 75010
Email: tshepard06@hotmail.com

NOVEMBER GENERAL MEETING MINUTES—MARTY CROUCH

Guild President Dolores Williams called the meeting to order at 6:45 p.m. The minutes of the July meeting were approved as written. The treasurer's report will be filed for review.

Dolores announced that our meeting time had officially changed to 6:45 to ensure we allow plenty of time for business and our guest speakers. Dolores reminded members that the December 2014 meeting would be cancelled since the church is not available.

Dolores also announced that all volunteer hours would be entered by workers on the qgplano.org website beginning in January.

Programs—Kaye Dunn called attention to the display board advertising January and February workshops and reminded members to sign up. She asked members to complete a short survey regarding the types of programs that would be of interest.

Community Service—LaDawn Dalley showed a sample kit and described the requirements for making baby wraps, a new project for the guild. Kaye Dunn showed sample baby quilts that could easily be quilted on a home machine. Carol Thune announced that there will be a Christmas stocking workshop on the third Friday in January at Dolores Williams house in Princeton and asked for volunteers. Carol also asked guild members to save sample size toiletries to be distributed to patients at the Veteran's Hospital.

Retreat—Mickie Warrington asked for members to let her know if they plan to attend the retreat at Mitchell RV Park on February 19th-22nd. Mickie needs a firm count in order to make reservations and book the caterer for meals. Information is available on the website. Lynne Haley described the peaceful environment of the park and encouraged members to join in on the fun.

Quilt Show—Pam Walsh challenged members to make a goal to enter a quilt in the 2015 show.

Pam described feedback from show guests who were inspired by all types of quilts. Discussion from the floor supported the challenge and encouraged everyone, from beginners to master quilters to enter a quilt in the show. Categories for the show will be available on the registration forms that can be accessed on the website on February 1.

Mini-Quilts—Tina Connolly displayed the mini-quilts donated this month.

Activities—Linda Neal awarded the UFO door prize provided by Quilters Connection to Aurora Chancey. The final recognition of the UFO "Queen" will be announced in January. Linda encouraged members to select a center block for the Round Robin mystery and to look forward to instructions on the first border to be announced in January.

Nine patch—Debbie Seher reported that nine patch blocks have been sent to two members who recently moved away: Marie Zaczowski and Rhonda Kuntz. Instructions are on the website.

Membership—Donna Petrick recognized new members and guests. Nine door prizes were awarded from the following merchants:

Blue Ribbon Quilt Shoppe, Wylie TX
Quilters Connection, Dallas TX
Quilt Country, Lewisville TX
Stitched With Love, McKinney TX
Sew Let's Quilt It, Dallas TX
The Quilt Asylum, McKinney TX

Show and Tell—Ileana Salzer, Terry Reisinger, Karen Bethel, Debbie Seher, Stephanie Hanson, MJ Fielek, Janet Plotkin and Rebecca Morris inspired us with their completed quilts.

The meeting adjourned. The guest speaker was Gail Garber who presented "Flying Colors: Design Quilts with Free Form Shapes."



*OCTOBER CASH FLOW
COMPARISON—CAROL LONG*

Bank Balance 74,384.54

INFLOWS

Administrative Inc.: Bank Interest	1.50
Membership Inc.: Membership Dues	1,685.00
Programs Inc.: Workshop	421.64
Quilt Show Inc.: Photography & CD's	4.62
Quilt Show Inc.: Show Products	4.62
Retreat Fees	400.00
Sales Tax Collected	<u>0.76</u>

TOTAL INFLOWS 2,518.14

OUTFLOWS

Administrative Exp.: Bank Fees	23.00
Administrative Exp.:	
2015 TAQG Rally Day Gifts	110.96
Media Exp.: Web Site	126.00
Program Exp.: Facilities Rent	50.00
Program Exp.: Speaker Lecture	200.00
Program Exp.: Spk. Meals & Per Diem	16.35
Program Exp.: Speaker Travel	401.20
Program Exp.: Supplies & Equipment	21.64
Program Exp.: Workshop Facility Rent	30.00
Program Exp.:	
Workshop Teacher Fees	<u>350.00</u>

TOTAL OUTFLOWS 1,329.15

Bank Balance 10/31/14 75,573.53

Bank Balances	<u>09/30/14</u>	<u>10/31/14</u>
Operating Account	50,259.88	51,447.37
Money Market Account	<u>24,124.66</u>	<u>24,126.16</u>
	74,384.54	75,573.53



*QUILTS OF BECKY GOLDSMITH—
OUR FEBRUARY SPEAKER*



High Street Antiques has a new Quilt Shop!
 Visit Plum Good Quilting and 286 other shops for all your Christmas needs and enjoy lunch at the Chocolate Angel!
 Go to www.plumgoodquilting.com for maps and holiday store hours.
 While picking up quilty Christmas gifts, enjoy 30% off all books thru December.

YEAR-END FINANCIAL REPORT—CAROL LONG
OCTOBER 1, 2013—SEPTEMBER 30, 2014

<u>Income</u>	<u>Subtotal</u>	<u>Total</u>	<u>Community Service Expenses</u>	\$ 1,968.77
<u>Administrative Income</u>		\$ 112.91	Christmas Stockings	189.66
Bank Interest	4.82		Service Quilts Supplies	1,779.11
Other Administrative Income	23.09		<u>Education Expenses</u>	\$ 116.06
Service Pin Income	85.00		Education Supplies	116.06
<u>Guild Activities Income</u>		\$ 96.00	<u>Guild Activities Expenses</u>	\$ 66.00
Block Challenge	70.00		Challenge Expense	66.00
UFO Challenge	26.00		<u>Media Expenses</u>	\$ 329.35
<u>Media Income</u>		\$ 255.00	Web Site Expense	329.35
Newsletter Ads	255.00		<u>Membership Expenses</u>	\$ 814.19
<u>Membership Income</u>		\$ 3,364.94	Directory Expense	709.21
Guest Fees	70.00		Postage	46.00
Late Fees	53.00		Supplies	58.98
Membership Dues	3,235.94		<u>Program Expenses</u>	\$ 13,697.73
Membership Products	6.00		Meeting Set-up Fees	150.00
<u>Programs Income</u>		\$ 5,309.36	Facilities Rent	600.00
Workshop Income	5,309.36		Speaker Lecture	3,075.00
<u>Quilt Show Income</u>		\$ 58,985.40	Speaker Lodging	957.11
Admissions	16,377.39		Speaker Meals & Per Diem	432.64
Advance Ticket Sales	5,056.00		Speaker Travel Expense	1,360.48
Mini Quilt Income	5,242.50		Supplies and Equipment	92.27
Program AD Income	2,215.00		Transportation Cost for Guild Member	20.23
Raffle Ticket Sales	4,835.00		Workshop Facility Rent	330.00
Registration Fees	1,313.00		Workshop Teacher Fees	6,680.00
Show Meal Tickets	546.00		<u>Quilt Show Expenses</u>	\$ 35,442.31
Shipping	20.00		Advertising and Publicity Expense	405.00
Show Photography & CD's	115.00		Awards Expense	3,195.02
Show Products Income	1,494.51		Education Area Expense	128.89
Sponsorship Income	6,250.00		Facility Catering Expense	2,932.05
Vendor Booth Income	15,501.00		Facility Deposits and Rent	14,112.00
Wheel Chair Income	20.00		Facility Security Expense	647.50
Total Income		\$ 68,123.61	Facility Set-Up Expense	1,825.00
<u>Expenses</u>			Insurance	642.00
<u>Administrative Expenses</u>		\$ 7,910.27	Judging Fees	1,100.00
Administrative State Filing Fees	113.22		Judging Lodging	281.34
Bank Fees	73.00		Judging Meals	62.59
Computer, Software & Add'l Equipment	42.18		Judging Travel	636.16
CPA Expense	332.50		Mini Quilt Expense	134.49
Donation	300.00		Other Expense	108.39
Insurance	3,729.65		Postage and Supplies Expense	1,092.38
PO Box Rental	122.00		Printing Expense	4,718.70
Publicity	579.52		Raffle Quilt Expense	866.87
Retreat Expense	74.23		Registration Expense	192.64
Service Pins	252.64		Show Photography & CD's	200.00
Storage Unit	948.00		Show Products Expense	1,711.42
Supplies	693.33		Sign Printing	209.67
TAQG Dues	150.00		Volunteer Expense	200.20
TAQG Rally Day Gifts	500.00		Wheel Chair Rental	40.00
			Total Expenses	\$ 60,344.68
			Total New Profit Fiscal Year 2014	\$ 7,778.93