

# Quilters Guild of Plano, Inc.



FEBRUARY 2014

VOLUME 32, ISSUE 2

## THE PRESIDENT SAYS

I wonder how many people have been able to keep their New Year's Resolutions for the first month. A non-quilter would think quilting resolutions would be easy to keep, but we quilters know better. Most of us vow each New Year to:

- Only work on UFOs
- Only use my stash fabrics for this year's projects
- Organize my sewing room so I can find everything



These are great resolutions, but almost impossible to keep!

How many of you entered Linda Neal's UFO Challenge? Surprisingly enough, Linda's challenge is a great way to get you to decide on a plan of action of which projects you want to do this next year and keep you doing them. I have been doing a list like this for the last couple of years. The list is not carved in stone. It can change, but I have to think about what project will move off the list if I want to add something else. When the list is finished, I estimate how long each step will take (in terms of months or partial months) and how much of the project I want to do. I may find that I don't want to spend 6 months making a complete quilt, but will put down doing the blocks at 3 months. When I finish, I add up the months. Usually a year is needed with at least 40 months. Then things get deleted until there is a reasonable schedule. A plan is made as to which quilts will be made for my guilds' mini auctions. Everything.

It is fun to look over the list at the end of the year and see how I did, especially how many changes I had to make to the schedule because something new came along.

The board meeting will now meet at Tino's Too at 2205 Avenue K, Plano 75074. We will meet at 5:30 for dinner and 6:30 for the upcoming meeting on February 3<sup>rd</sup>.

Your President  
Dolores Williams

## INSIDE THIS ISSUE

The President Says . . . . .	1
Inside This Issue . . . . .	1
Guild Officers and Committee Chairs . . . . .	2
Community Service . . . . .	2
By Laws Review & Change . . . . .	3
Happiness is Quilting AD . . . . .	3
Community Service Cont. . . . .	3
Programs. . . . .	4
January General Meeting Minutes . . . . .	5
Challenges . . . . .	6
Sapphire Quilting AD . . . . .	6
AD Rates . . . . .	6
Minutes Continued . . . . .	6
January Board Meeting Minutes . . . . .	7
Quilt Show T-Shirts . . . . .	8
Quilt Show Registration . . . . .	8
Opportunity to Work . . . . .	8
Membership . . . . .	9
February Birthdays . . . . .	9
Financials . . . . .	9
Thank You . . . . .	9
Corrected Year End Financials . . . . .	10
Quilt Show Mini Auction . . . . .	11
TAQG Save the Date . . . . .	11
Year End Financials Cont. . . . .	11
UFO Challenge . . . . .	12
Texhoma One Stop Shop Hop AD . . . . .	12
February Speaker . . . . .	13

VISIT OUR WEBSITE AT: [www.quiltersguildofplano.org](http://www.quiltersguildofplano.org)

## GUILD OFFICERS AND COMMITTEE CHAIRS

### OFFICERS

PRESIDENT . . . . .	DOLORES WILLIAMS
VP FINANCE . . . . .	MJ FIELEK
VP MEMBERSHIP . . . . .	DONNA PETRICK & KEMBERLY WILSHIRE
VP PROGRAMS . . . . .	KAYE DUNN & SHERRY WORLEY
VP COMMUNITY SERVICE . . . . .	TERRI MENDELOW
VP EDUCATION . . . . .	OPEN
VP GUILD ACTIVITIES . . . . .	LINDA NEAL
VP MEDIA . . . . .	MICKIE WARRINGTON
SECRETARY . . . . .	LESLIE LEATHERS & MARTY CROUCH
QUILT SHOW 2014 . . . . .	PAM WALSH

### COMMITTEE CHAIRS

BEE KEEPER . . . . .	KATHY HOOK
BLOCK OF THE MONTH . . . . .	LINDA NEAL
DIRECTORY . . . . .	LYNNE HALEY AND LISA TERRY
DOOR PRIZES . . . . .	OPEN
EDUCATION—CHILDREN . . . . .	OPEN
EDUCATION—HIGH SCHOOL/COLLEGE . . . . .	LADAWN DALLEY
EDUCATION—SENIORS . . . . .	MINDY MYINT
EDUCATION—ORGANIZATIONS . . . . .	SUZY BOYLE
GRAPHIC DESIGNS . . . . .	ROSE-CLAIR FLETCHER
HISTORIAN . . . . .	AURORA CHANCY
HOSPITALITY . . . . .	LINDA NEAL
INVENTORY CONTROL . . . . .	CAROL SURRELLS & SHIRLEY WOLFE
NEWSLETTER EDITOR . . . . .	PAT FOWLER
NINE PATCH . . . . .	DEBBIE SEHER
RETREAT 2014 . . . . .	CYNTHIA WEISZ, EMILY ARMSTRONG, LYNNETTE MAYTUBBY, SHARON MCGINNIS, PAM CROCKER, KAREN WOODARD, & TINA CONNOLLY
SERVICE QUILTS . . . . .	KAREN CHRISTOFFER WEDNESDAY GIRLS
SHOW'N TELL . . . . .	DEE ANN MCFARLIN
STOCKING PROJECT . . . . .	LADAWN DALLEY
SUNSHINE AND SHADOWS . . . . .	PAT WIAN T
TAQG . . . . .	SHERRY WORLEY
TREASURER . . . . .	CAROL LONG
WEB E-MAIL . . . . .	TINA CONNOLLY
WEB MASTER . . . . .	MICKIE WARRINGTON



## COMMUNITY SERVICE— TERRI MENDELOW

**Community Service Donations:** We need to replenish our donation quilts so I can make another round of deliveries. Any help you can give to put a top together, quilt a quilt or put on a binding and label will help us toward our goal.

We have donated 63 quilts since October. I have set a goal of 300 quilts by October 1, 2014. In 2012-2013, we donated 206 quilts. Hopefully our new goal will be attainable. When you visit the Community Service table at guild meetings I will have a graph to show us how far along we are in meeting this goal.

**Stocking Project:** Thanks to the hard work of LaDawn Dalley and her daughters, as well as the contribution of the membership, 833 Christmas Stockings were delivered to Soldier's Angels in December.

The Stocking Project is now in the hands of the small group, The Nifty Needlers. They plan to cut kits and have them ready for the guild meetings so we can get an early start on getting stockings made. Hopefully we will be able to have 1,000 stockings ready to deliver in December. You can also donate small toiletry items that will also go to Soldier's Angels.

**Birthday Quilts:** When you make your Birthday Quilt, it is to be donated to Community Service. Your birthday quilt could be a nickel quilt that can be used for the TAQG challenge and for community service. It can also be item #13 on your list of Queen of the UFO's challenge. There are many ways to purpose your Birthday Quilt. Please make sure to attach your name to your Birthday Quilt if you are donating it to community service.

**Sit & Sew:** 2<sup>nd</sup> Tuesday Community Service Sit & Sew will be on February 11. We meet from 10 a.m.-3 p.m. at the Plano Sewing Center on Custer at Spring Creek Parkway. This is a come and go group. Bring your sewing machine and supplies. Pre-cut kits are supplied to make a quilt top for community service. This is a fun, active group and a good way to meet other members.

(Continued at the bottom of Page 3)

## BY-LAWS REVIEW AND CHANGE —DOLORES WILLIAMS

At the last board meeting, the board voted to change Standing Rule 9. To change a Standing Rule after the board votes for the change requires it be published in the newsletter and then voted on at the next meeting.

Currently **Standing Rule 9** reads:  
Membership dues are \$25.00. Late fee is \$4.00. Membership dues are prorated to \$15.00 in April for new members.

Proposed change for **Standing Rule 9** is:  
Membership dues are \$30.00. Dues will be discounted by \$5.00 if paid before January 1. Membership dues for a **new member joining after** April 1, of the current year will be eligible for a prorated \$15.00 membership. A new member is defined as a person that has not previously joined the guild.

**History:** The Board does not feel there should be a late fee tacked onto membership. The late fee was added to encourage members to rejoin early so the directory can be printed. It has been decided that the member is responsible to rejoin in time to be included in the directory. However, we do want members to rejoin so we are changing the dues to be \$30.00 with a discount if they are paid before January 1. It will be the member's responsibility to join in time to make the directory.

The other problem we had with the membership fees is that there are a lot of quilters that join the guild in June so they can enter their quilts in the quilt show without paying the non-member entry fee. While we love the new members, the ones joining just to show their quilts are not participating members. It is a lot of work to get the new member information out for non-participating members. It was vaguely stated in the by-laws that only new members would get prorated membership fees. So we added the definition of a new member for clarification.

Questions? Call me at 972-832-1134 or email me at [quiltingpony@hotmail.com](mailto:quiltingpony@hotmail.com).

Dolores Williams

## Happiness Is...QUILTING!

217 N. Kentucky, McKinney, TX 75069

972-542-8839

Shop Hours: Mon-Sat 10-5 & Thurs 10-7



Visit our booth  
at the Heart of Texas  
One Stop Shop Hop

Waco, Texas

Jan. 31 &

Feb. 1

Coming in  
2014

Classes with  
The Quilted Crows  
Pat Sloan  
Harriet Hargrave  
Becky Goldsmith  
and more!

"The Happiest Little Quilt Shop In  
Texas!"

[www.HappinessIsQuilting.com](http://www.HappinessIsQuilting.com)



(Community Service Continued from Page 2)

Please let Karen Christoffer know you will attend so she can set up a spot for you.

[karen.christoffer@tx.rr.com](mailto:karen.christoffer@tx.rr.com).

**Service Hours:** Please keep track of the hours you donate to guild projects or jobs. Log them into the Service Hours book at the Community Service table or email them to Julie Schaefer: [juliescha@sbcglobal.net](mailto:juliescha@sbcglobal.net).



## PROGRAMS—SHERRY WORLEY AND KAYE DUNN



Join us in February as we welcome Connie Litfin back to speak. Connie's program is about Penny Rugs. She will tell us about their history and share many samples. Connie is offering a workshop on February 15<sup>th</sup>, and still has space available. This is a 4-hour class that costs \$45 and includes the price of the kit. Please contact Kaye Dunn to sign up for class. Class sign-up will

still be available at the Guild meeting. Since the only thing you need to bring to class is a good pair of small scissors, you can decide that night to sign up! Kits are available in Neutral, Bright, and Rustic.

You can also join us on February 15<sup>th</sup> for Nickel Quilt Fun! Two Accuquilt Studio die cut machines will be set up for your use in cutting Nickel Squares from your own fabric. Your fabric pieces need to be cut 11" x 21" to cut 8 squares at one time. There will be Nickel Quilt Books to view and several samples of tops and finished quilts. Please contact Sherry Worley to sign up. There is no charge, but you must sign up to attend. This will run from 10:00 a.m. till

2:00 p.m., come when you can. Snacks will be served. If you are attending the Penny Rug Workshop, consider joining us when your class finishes at 12:30.

In March we will learn about safety from a Plano Police Officer. This comes just in time to remind us to be careful when we visit the Dallas Quilt Celebration.



It is not too soon to think about signing up for the workshops in April. We are thrilled to have a visit from Karen Kay Buckley! The Friday April 11<sup>th</sup> Workshop is Oriental Flowers. The Saturday April 12<sup>th</sup> workshop is Fiesta Mexico Block 3

with borders. Visit the Quilters Guild of Plano website for more information. You can view samples at [karenkaybuckley.com](http://karenkaybuckley.com)



**Workshops Fees:** \$40/day for members, \$50/day for non-members

**Hours:** 8:30 a.m.—3:00 p.m.  
doors open at 8:00 for setup

**Location: Parkway Hills Baptist Church**  
2700 Dallas Parkway, Plano, Texas 75093

**Member Bonus!!**

**Advance Registration and Multi-day Discounts**

Prepayment of registrations **received 35 days** prior to the scheduled event, entitles members to take a \$5.00 discount with each prepaid workshop. If you take both days offered by the instructor you may take an additional \$5.00 discount. Members can take two days of classes from a national teacher for \$65.00. See the guild website at [www.quiltersguildofplano.org](http://www.quiltersguildofplano.org) and go to the *Upcoming Events* page for more information. Fees are refundable only in the event the speaker cancels her appearance. Questions may be directed to the

workshop coordinator. Refer to our website for current email.

Name: \_\_\_\_\_

Address: \_\_\_\_\_

City and Zip: \_\_\_\_\_

Phone: \_\_\_\_\_

Email: \_\_\_\_\_

Enclose a self-addressed stamped envelope to receive the supply lists via USPS. Supply lists may also be printed from the website. Your telephone number and email are particularly important so we can reach you in the event of any last minute changes.

**TOTAL AMOUNT ENCLOSED:** \_\_\_\_\_

Bring Completed Form to a Meeting, or mail to

Kaye Dunn  
4833 N. Meadow Ridge Circle  
McKinney, TX 75070

## JANUARY GENERAL MEETING MINUTES—LESLIE LEATHERS

**Guild President Dolores Williams** called the meeting to order at 7:02 p.m. She asked that anyone wanting to address the members please come forward. The following members made reports.

**Pam Walsh, Quilt Show 2014 Show Chair**, pointed out this year's raffle quilt and asked all members to either buy or sell at least 24 tickets. She stated that T-shirts for the show may be ordered during January through March only. There is only one style available in a turquoise blue and the cost is \$13.00. Order forms are available on line. After the March meeting, no further T-shirts will be ordered. There are already eight vendors signed up for the quilt show and the show quilt entry forms have changed and are available on the web site. All members are asked to deliver this year's quilt show book marks.

**Kaye Dunn, Co-Chair of Guild Programs**, said there are still a few openings for the workshops this weekend. There will be a Penny Rug workshop in February, as well as the free Nickel Quilt class. The date is February 15<sup>th</sup> and will begin at 12:00. If additional members wish to participate another a.m. class will be added. The Nickel quilt workshop will be for cutting the nickel quilts in preparation for Rally Day.

**Cynthia Weisz, Retreat 2014 and Mini Quilts**, reported that those members going to Retreat next month need to finish payment for the retreat.

Many mini-quilts are needed for this year's quilt show. They are to be no more than 24 x 24 inches. The rules will be on the web site by February 1<sup>st</sup>. Members can add hours to their volunteer time when making a mini quilt.

**Kathy Hook, Bee Keeper**, plans to visit all established Bees this year. She wants to see what is being accomplished and what is shared. There is a need for new Bees due to the number of new members.

**Julie Schaefer** needs everyone's service hours for 2013 turned in before 1-31-14. The hours will determine which awards are to be given.

**Donna Petrick, VP of Membership**, said 86 members, potential new members, and guests were present this evening. Door prize ticket

numbers were called out. The donors for this month were: Alford Inn Quilt Shoppe, Van Alstyne—Happiness is...Quilting, and The Quilt Asylum—McKinney, Minding My P & Q's, Denton—Quilters Connection and Sew Let's Quilt It, Dallas—Quilt Country, Lewisville—The Texas Quilter and Needleworks, and Quilters Guild of Plano. Donna asked Mickie Warrington to come forward to help present a gift to MJ Fielek for her work as past president of the Guild. Instead of the usual quilt given to past presidents, a beautiful quilted bag made by Mickie, containing envelopes of money from appreciative members was presented to MJ. The guild members hope this contribution will be useful in her trip to China later in the year. MJ has been a guild member for 21 years.

**Linda Neal, Guild Activities Chair**, explained the UFO (Unfinished Objects) Challenge for this year. The cost is \$1.00 to enter, and forms can be found on-line. There will be an extra bonus for community service quilts. The ugly fat quarter mini quilt will start in March.

**Donna Petrick**, needs help picking up door prizes monthly, and needs mini-quilts made for the Rally Day. Last year the guild turned in 7 quilts. There will be a workshop for two days for Nickel Mania beginning February 15<sup>th</sup>. The cost is \$100.00.

**New Business:** President Dolores Williams addressed the members about a proposal being discussed at the Board meeting. New membership forms are out October 1<sup>st</sup>, and must be completed before January 1<sup>st</sup>. The proposal wants to change the Standing Rule # 9 which currently states,

*Membership dues are \$25.00. Late fee is \$4.00. Membership dues are prorated to \$15.00 in April for new members.*

The proposal change would state

*Membership dues are \$30.00. Dues will be discounted by \$5.00 if paid before January 1. Membership dues for a **new member** joining after April 1, of the current year will be eligible for a prorated \$15.00 membership. A new member is defined as a person that has not previously joined the guild.*

This cutoff date is proposed so that the current year's directory can be finished and delivered to

(Continued at the bottom of Page 6)

## ARE YOU READY FOR A CHALLENGE SHERRY WORLEY

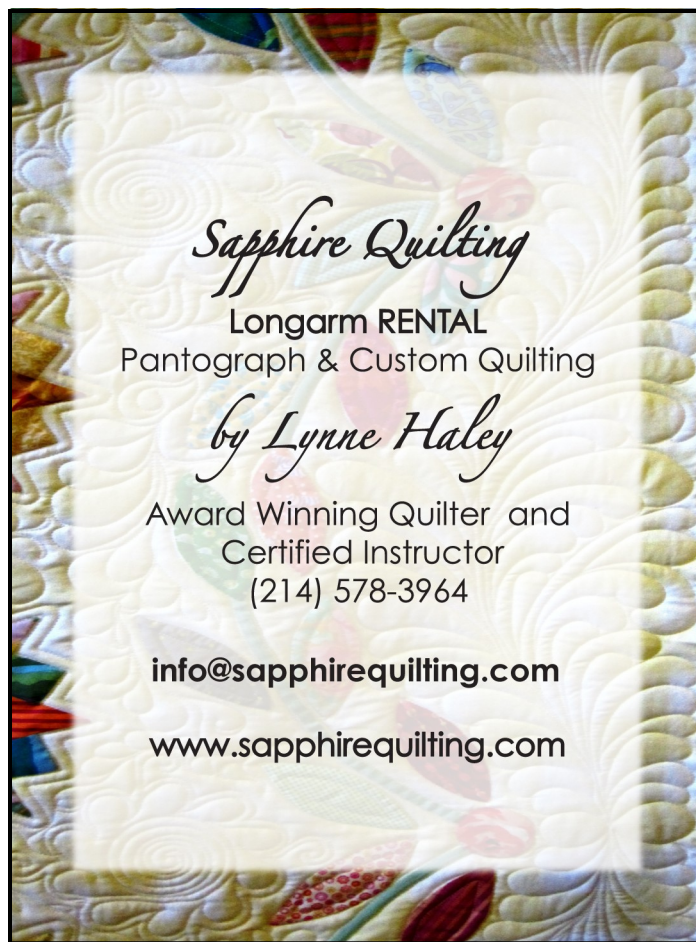
Are you ready for a challenge, if so, you have many to choose from this year! The following is a listing of current challenges. In some cases one quilt may be used to complete more than one challenge.

**Birthday Quilt**—A birthday quilt is a baby sized quilt that is made from your own materials. It is to be a finished quilt given to Community Service in the month of your birth. In December, anyone who donated a Birthday Quilt will be eligible for a drawing. We will have at least 3 prizes to be given away. One prize is a quilt kit, another is a very gently used Alto's Quilt Cut2. The third prize is yet to be determined.

**Linda's UFO Challenge**—You can read about this challenge elsewhere in this Newsletter. Keep in mind that the last item on the list is a quilt donated to Community Service. If you donate this quilt in the month of your birth...two birds with one stone!

**Dolores' Nickel Quilt Challenge**—Dolores has challenged all TAQG member guilds to see who can make the most finished Nickel Quilts. This quilt can be used to meet the TAQG Nickel Quilt Challenge and/or the UFO Challenge. Make sure your name is on your Birthday Quilt. The winning Guilds will be able to show their quilts from the stage at Rally Day. Her rule says that a quilt must have been made between June 1, 2013 and June 30, 2014. So if you make a Nickel Quilt, donate it in your birth month (through June), and are participating in Linda's UFO Challenge...three birds with one stone!

More Challenges are on the way. Watch for Linda Neal to announce another one later in the year.



### COMMON THREADS AD RATES

Half Page:	Quarter Page:	Business card:
1 month = \$40	1 month = \$25	1 month = \$15
3 months = \$90	3 months = \$60	3 months = \$35

Please make ads in "jpg" files and email to Mickie Warrington at [media@quiltersgroupofplano.org](mailto:media@quiltersgroupofplano.org). — [quiltersguildofplano.org](http://quiltersguildofplano.org)

(Minutes Continued from Page 5)

members sooner. This proposal is to discourage people from joining for the half year rate only to be able to enter quilts into the Quilt Show, instead of becoming active members of the Guild. Current By-Laws state that returning members pay the full price, and that new members only pay the pro-rate if joining for half a year or less.

Dolores said that John Worley has offered to do reports to show where the guild money is spent, as well as the areas where the funds are coming from. He has also offered to do a breakdown of service

hours for different guild activities, and give statistics about the percentage of work done.

**MJ Fielek, VP of Finance**, stated that the reports for the 2013 year end are available for review here at the meeting as she was unable to get them to the newsletter when due. She said that for year end the guild showed a \$6,000.00 profit. There was no formal Adjournment to the Meeting. The business part ended at approximately 7:35 p.m. Guest speaker Susan Brubaker Knapp was introduced.



## JANUARY BOARD MEETING MINUTES—MARTY CROUCH

Dolores Williams called the meeting to order at 1:30 p.m.

### Items discussed:

1. We desperately need a VP Education. There are three strong chairpersons to assist this position.
2. A motion was made by MJ Fielek and seconded by Donna Petrick to present a revision to the Policy and Procedures, Standing Rules, Item 9 to the guild for a vote. The language will reflect: Membership dues are \$30, discounted to \$25 for dues paid prior to January 1. Membership dues are prorated to \$15.00 in April for new members (those who have never been a member of the Guild). Returning members are responsible for the full year's membership dues, even if renewal is after April. The motion passed.
3. A motion was made by MJ Fielek and seconded by Linda Neal to provide John Worley with the available information needed to develop charts, graphs or other visuals that present service hour information in a format for review. The motion passed.
4. Terri Mendelow made a motion, seconded by Donna Petrick that John Worley also be requested to create a program where members could log in volunteer hours electronically. The motion passed.
5. Tina Connolly reported for Media:
  - a. The deadline for newsletter articles is extended to the second Friday after the guild meeting with the newsletter to be published first week of the month.
  - b. Guild e-mails will include a link to unsubscribe, but the mailing list will not be purged for members whose dues are delinquent.
  - c. The corrected financials will be published on the website with a link provided in the guild e-mail.
6. MJ Fielek presented a concern that the split of responsibility between the VP Finance and Treasurer has created a communication difficulty in relaying financial information to board members. The resolution suggested was to return to evening board meetings, so the Treasurer could attend.
7. The tax incentive form needs to be changed to show the correct officer. Donna Petrick will forward the template to Marty Crouch. Forms not maintained on the web will be maintained in the future by the Secretary.
8. Dolores Williams reviewed the year-end financial report and noted that \$12,000 in revenues was spent in activities that directly benefited guild members. A suggestion was made that John Worley also review the financial report and provide a graphic that shows where membership dollars are spent.
9. Quilt Show bookmarks were distributed. Pam Walsh reported that she plans to provide a sign-up sheet to requested members to deliver bookmarks to local quilt shops.
10. Board members were reminded that the retreat payment deadline is the end of January.

The next Board meeting will be held **February 3, 2014**, location and time to be determined.

The meeting adjourned at 3:20 p.m.

### Those in attendance:

Kaye Dunn	Linda Neal
Tina Connolly	Donna Petrick
Marty Crouch	Pam Walsh
MJ Fielek	Dolores Williams
Terri Mendelow	Sherry Worley



## QUILT SHOW T-SHIRTS— PAM WALSH

Quilt Plano 2014 show t-shirts are now available for pre-order for \$13. They are a beautiful bright turquoise blue with 5 individual pineapple blocks twirling around the neckline. The pineapple block design is based on this year's raffle quilt. The shirts come in a standard (Unisex) cut in sizes small—5XL or a Ladies cut in sizes Small—3XL. The ladies-cut has a slightly more fitted look with a scooped (but not low) neck-line. All shirts are 100% cotton and will shrink some.



Wearing our Show Shirts is a great way to advertise the Show when attending guild meetings, visiting quilt shops, retreating and at TAQG Rally Day. Plus, it's a great way to show your **GUILD SPIRIT** by wearing them during our Show in August.

Shirts can be ordered at the Guild meetings in February and March, at our up-coming Guild Retreat, or by contacting [pam.walsh92@gmail.com](mailto:pam.walsh92@gmail.com). Shirt orders must be received by March 13<sup>th</sup>. *Please note: Due to the loss on un-sold shirts in past years, T-shirts will ONLY be available by pre-order.*

## QUILT SHOW REGISTRATION— LYNNE FRITSCHÉ



Quilt Plano 2014 is only a few months away, and we are looking forward to another show full of beautiful quilts! Lots of work has already been done, and we are ready to accept your show entries.

As of February 1<sup>st</sup>, the Registration Information and the Entry Form are available on the website. Please read through all the information—there have been a few changes since last year, including some new categories. There are definitions to help you decide which category you should choose, and a flow chart to help determine if you are a Master or an Artisan.

We have increased the number of cash prizes to be awarded this year. A cash prize will be awarded for every blue ribbon winner, and we have added an additional special award for “Merit Machine Quilting.”

The deadline for quilt entries is June 12<sup>th</sup>, but do not procrastinate. As the popularity of our show increases, we may have to limit the number of entries accepted due to space limitations.

For additional information or questions, contact Lynne Fritsche at [ShowRegistration@QuiltersGuildofPlano.org](mailto:ShowRegistration@QuiltersGuildofPlano.org) and keep sewing!

## OPPORTUNITY TO WORK FROM HOME—MICKIE WARRINGTON

I know we all see the advertisements of work from home opportunities, but this is not a scam! Do you have experience with web site development or maintenance? The Guild's site is developed on a PC, and much is done directly on the web hosting site. Knowledge of HTML is needed and knowledge of CSS is a plus. We do have a copy of MS Expression Web. That can be used to prototype changes on your PC and, then, copy the HTML code to the web hosting site ... MS Expression Web is not stored on the Web Hosting site. You could also use a variety of free code development products to generate the HTML. If interested, please contact Mickie Warrington at [webmaster@quiltersguildofplano.org](mailto:webmaster@quiltersguildofplano.org).

Thanks!!



**MEMBERSHIP NEWS  
& FEBRUARY BIRTHDAYS—  
DONNA PETRICK & KEMBERLY**

We had a very nice turn out for Susan Brubaker Knapp with 86 members and visitors attending. The people pages of the directory were handed out along with an updated list of current members and a corrected page on long-arm quilters. If you did not get your copy, please plan to do so in February. The list of current members lets you know if you have all the pages that have been given out in past months as well as to see if our records are current. It's always possible to have missed someone when we were taking in so many payments. Current membership cards are being mailed out this month if you haven't picked it up by now at the meetings. However, postage is too expensive to mail out the directory pages. Please have a friend get yours for you if you cannot attend the meeting.

We will have a camera at the meeting next month to take pictures of new members and those who have not had their pictures taken for the directory. Please do have your picture taken. It helps so much to put a face and name together.

I have ordered the 2014 service bars as we already have people who have earned their bars for this year. Julie Schaefer is updating the service hours for 2013. If you have not submitted your hours to her, please do so now. I'll have pins and bars with me at the February meeting along with the 2014 bars if they come in on time.

**February Birthdays**

Mary Katharine Hook	02/02
Stephanie Hanson	02/04
Sharon Umphred	02/04
Marie Zaczkowski	02/05
Audena Cowin	02/06
Dee Ann McFarlin	02/07
Carlisle Walters-Arbuckle	02/07
Linda Neal	02/11
Gwen Gooch	02/12
Kathy Dunigan	02/15
Sue Hurth	02/19
Julie Schaefer	02/22
Jan Potts	02/25
Bonnie Simpson	02/25
Cynthia Weisz	02/25
Robin Williamson	02/27
Dorma Waltrip	02/28

**DECEMBER CASH FLOW  
COMPARISON—CAROL LONG**

Bank Balance 11/30/13	65,495.65
<b>INFLOWS</b>	
Administrative Inc.: Bank Interest	.39
Other Administrative Income	23.09
Media Inc.: Newsletter Ads	40.00
Membership Inc.: Late Fees	13.00
Membership Inc.: Membership Dues	250.00
Programs Inc.: Workshop Income	440.00
Quilt show Inc.: Sponsorship Income	250.00
Retreat Fee Collected	75.00
Texas Sales Tax Collected	<u>1.91</u>
<b>TOTAL INFLOWS</b>	1,093.39
<b>OUTFLOWS</b>	
Administrative Exp.: Donation	300.00
Administrative Exp.: Publicity	359.52
Membership Exp.: Directory Expense	290.68
Program Exp.: Meeting Set-up Fees	150.00
Programs Exp.: Facilities Rent	50.00
Programs Exp.: Spk. Meals & Per Diem	81.20
Quilt Show Exp.: Printing Expense	<u>459.00</u>
<b>TOTAL OUTFLOWS</b>	1,690.40
Bank Balance	<u>64,898.64</u>
Bank Balances	<u>11/30/13</u> <u>12/31/13</u>
Operating Account	41,364.99    40,757.59
Money Market Account	<u>24,130.66</u> <u>24,131.05</u>
	<u>65,495.65</u> <u>64,898.64</u>

**THANK YOU—MJ FIELEK**

I would like to take this opportunity to thank the Guild for the wonderful gift given to me for serving as your President for two years. I will use the money on my trip to China. My daughter was born in Taiwan and wanted to take a trip back for her 50<sup>th</sup> birthday which is this year. Thanks for allowing me to be your President and I hope I made it a little friendlier.

M J Fielek

**YEAR END FINANCIAL REPORT 10/01/12—09/30/2013—  
CORRECTED REPORT—CAROL LONG**

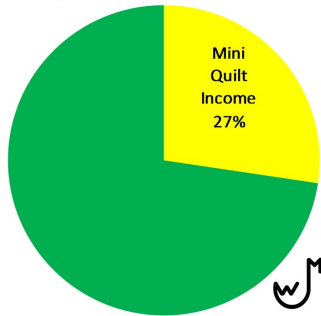
<u><b>INCOME</b></u>			
<u><b>Administrative Income</b></u>			
Bank Interest	12.16	Postal Bulk Mail Permit	200.00
Donations	323.10	Service Pins	240.59
Service Pin Income	10.16	Storage Unit	1,018.91
<u><b>Community Service Income</b></u>		Supplies	311.43
Donation	536.85	TAQG Dues	100.00
<u><b>Guild Activities Income</b></u>		TAQG Rally Day Gifts	461.00
Block Challenge	28.52	<u><b>Community Service Expenses</b></u>	
<u><b>Media Income</b></u>		Donation	340.00
Newsletter Ads	585.00	Moving Expenses	653.18
<u><b>Membership Income</b></u>		Service Quilts Supplies	721.64
9-Patch Sales	20.00	Yarn Expenses	100.37
Guest Fees	135.00	<u><b>Education Expenses</b></u>	
Late Fees	36.00	Education Supplies	281.75
Membership Dues	6,274.00	<u><b>Guild Activities Expenses</b></u>	
Membership Products	138.57	Challenge Expenses	140.14
Postage	5.50	<u><b>Media Expenses</b></u>	
<u><b>Program Income</b></u>		Web Site Expenses	199.39
Workshop Income	4,020.00	<u><b>Membership Expenses</b></u>	
<u><b>Total Income for Guild Business</b></u>		Directory Expense	1,812.02
	<u>12,124.86</u>	Hospitality Gift Expense	30.99
<u><b>Quilt Show Income</b></u>		Postage	5.05
Admissions	13,499.72	Supplies	22.88
Advance Ticket Sales	3,990.14	<u><b>Programs Expenses</b></u>	
Mini Quilt Income	4,485.00	Advertising—Programs	273.99
Program Ad Income	850.00	Facilities Rent	590.00
Raffle Ticket Sales	2,224.00	Speaker Lecture	3,010.00
Registration Fees	1,251.00	Speaker Lodging	110.04
Show Meal Tickets	765.00	Speaker Meals & Per Diem	1,129.16
Show Photography & CD's	85.43	Speaker Travel Expense	1,534.85
Show Products Income	1,364.95	Supplies and Equipment	381.55
Sponsorship Income	6,125.00	Workshop Facility Rent	300.00
Vendor Booth Income	14,256.50	Workshop Teacher Fees	4,850.00
Wheel Chair Income	42.00	<u><b>Total Expenses for Guild Business</b></u>	
Total Income for Quilt Plano 2013	<u>48,938.74</u>	<u>22,229.19</u>	
Total Income	<u>61,063.60</u>		
<u><b>Expenses</b></u>			
<u><b>Administrative Expenses</b></u>		<u><b>Quilt Show Expenses</b></u>	
Appraise 3 Guild Quilts	90.00	Admission Expense	58.37
AQS Membership	25.00	Advertising and Publicity Expense	1,026.03
Bank Fees	134.20	Awards Expenses	1,850.50
Computer, Software and Add'l Equip.	1,091.86	Education Area Expenses	97.05
CPA Expenses	427.50	Facility Catering Expenses	2,947.70
Donation	300.00	Facility Deposits and Rent	14,789.54
Fed. & State Tax Fees	72.70	Facility Security Expenses	630.00
Insurance	1,151.00	Facility Set Up Expenses	1,508.55
PO Box Rental	118.00	Insurance	556.00
		Judging Fees	668.00
		Judging Lodging	89.27
		Judging Meals	105.98
		Judging Travel	82.50
		Mini Quilt Expense	176.01
		Postage & Supplies Expense	1,003.10

(Continued at bottom of Page 11)

## QUILT SHOW MINI AUCTION— TINA CONNOLLY & PAM WALSH

Some members may wonder why we make such a push throughout the year for donations of mini, small appliqué, and art quilts for the auction that we hold during the show.

Quilt Plano 2013 Profit



This chart says it all. The income from last year's mini auction accounted for 27% of our total show profit.

We welcome donations of a wide variety of styles and techniques of quilts with no side longer than 24" inches. So no matter what your preferred quilting technique—traditional or art, pieced or appliqué, hand or machine— there is a place for your mini or small quilt in our auction. Our customers appear to especially appreciate holiday or seasonal quilts and whimsical, "cute" quilts.

We will be accepting quilts for the auction up until show time, but the sooner the better. Beginning in February, through July, we will have a special drawing for those members donating a quilt that month. Beginning in June, we will have a gallery of all the quilts donated-to-date on our website. Because, yes, we have people bidding long-distance.

(Year-End Report Continued from Page 10)

Printing Expense	3,333.16
Publicity	150.00
Raffle Quilt Expenses	840.00
Registration Expenses	115.48
Security Equipment	238.11
Show Photography & CD	200.00
Show Products Expense	1,534.93
Show Start-Up Money	0.00
Sign Printing	218.95
Vendor Expenses	89.31
Volunteer Expense	118.95
Wheel Chair Rental	120.00
<b>Total Expenses for Quilt Plano 2013</b>	<b>32,547.49</b>
<b>Total Expenses</b>	<b>54,776.68</b>
<b>Total New Profit Fiscal year 2013</b>	<b>6,286.92</b>

## TAQG NEWS—SAVE THE DATE SHERRY WORLEY

For those of you who may not know—TAQG is the Texas Association of Quilt Guilds. The Quilters Guild of Plano is a member of TAQG and that means that as a member in Plano you are a member of TAQG. TAQG meets every other odd numbered month and Guilds share information about how to run a successful quilt guild. TAQG also invites all of its members to attend a free Rally Day. Rally Day is a full day of lectures by a nationally known teacher, door prizes and fun!

The Quilters Guild of Plano is one of the Host Guilds of Rally Day this year. Your TAQG Representative, Sherry Worley, is the Chairman of the Rally Day 2014 Committee. Plans are well underway for an exciting day. Please save the date of July 12, 2014! As that date nears we will need many volunteers, but for now Sherry, Donna Petrick and Dolores Williams serve on the Committee.

Rally Day 2014 features Pat Speth, the author of the Nickel Quilt Books. Pat's patterns are all based on 5" squares and are wonderfully scrappy quilts. Pat will have a booth selling her products. A two day workshop is available at an additional charge. Plano already has two Mini Quilts donated for the Mini Auction. Thank you to Kaye Dunn and Pam Walsh. Plano's beautiful Raffle Quilt will be one of approximately 30 Raffle Quilts on display. The Pre-Rally Day Raffle Basket already contains an Elna 540 Sewing Machine with a value of \$800, that was donated by Elna USA and Quilt Mercantile of Celeste Texas. The current value of the Pre-Rally Day Raffle Basket is \$1200, and growing. This year, for the first time ever, the first door prize to be given away at Rally Day is a sewing machine. This machine is a Babyloc Molly that was donated by Plano Sewing Center.

At the February meeting Sherry will have a table set up where you can look at Nickel Quilt Books. Available for sale will be: TAQG Pins, Pre-Rally Day Raffle Tickets, and Box Lunch Tickets. You can also pick up Workshop Registration Forms.

Please go to [www.tagg.org](http://www.tagg.org) for more information.

**Happy Valentines Day !**

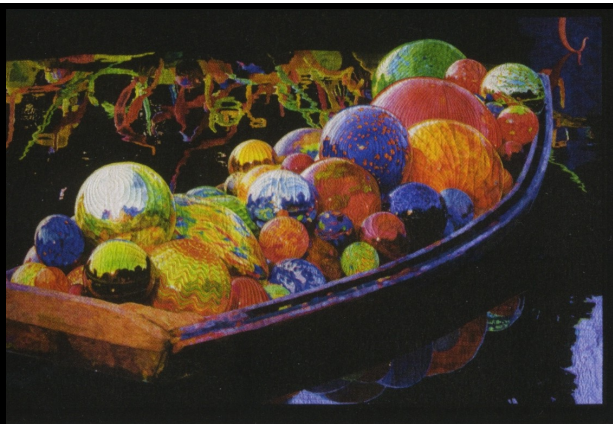


## UFO CHALLENGE 2014—LINDA NEAL

The UFO challenge signups are in full swing. At the January meeting we had 20 members turn in their UFO lists. You can sign up at any time to join the challenge. Simply go to the guild website, and look under the green heading "UFO Challenge." Print off the form, make a copy for yourself, and send me the form with \$1 or bring it to the next guild meeting. This is a great way to start the new year and finish some OLD projects! At the guild meetings you can bring in your finished projects and show them off! We will have monthly drawings for prizes for finished projects and crown the "Queen of the UFO's" in December. If you have any questions- please email me at: [lindanealmck@Hotmail.com](mailto:lindanealmck@Hotmail.com).

### POINT OF INTEREST

This article appeared in this month's Quilter's Magazine along with other winning quilts of the Houston Quilt Show from October 2013. Melissa Sobotka won, "Best of Show, Mayer's Choice, Viewer's Choice, and Member's Choice," at Quilt Plano 2013 in August. She won, "Best of Show," and a \$10,000 prize at Houston.



*Chihuly's Gondola (41" x 79")  
by Melissa Sobotka of  
Richardson, Texas. This quilt is  
the quiltmaker's reflection of a  
glass sculpture by master glass  
sculptor Dale Chihuly, which  
was part of an installation at  
the Dallas [Texas] Arboretum in  
2012. Award: Handi Quilter  
Best of Show*

The Quilter | 97



# TEXHOMA

## One Stop Shop Hop

Approximately 20 Quilt Shops Under 1 Roof!

Friday & Saturday

March 28 & 29

Time: 9-5

Cost: \$5

**Grand Prize**

Janome 3160

Sewing Machine  
valued at \$999!

**Lots of door prizes and  
free block patterns.**

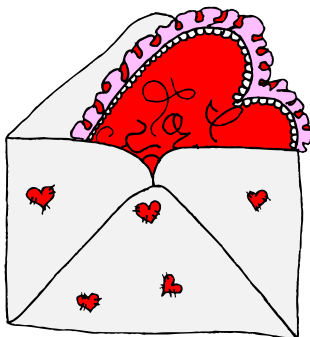
[texhomaonestopshophop.com](http://texhomaonestopshophop.com)

Wichita Falls ' Multi-Purpose Events Center,  
1000 5th. St., Wichita Falls, TX 76301



**QUILTERS GUILD OF PLANO, INC.  
PO BOX 260216  
PLANO, TEXAS 75026**

*The Quilters Guild of Plano, Inc. does not  
discriminate on the basis of race, color,  
national origin, sex or handicap.*



## **QUILTERS GUILD OF PLANO**

**Presents January Speaker**

*Connie Litfin*

**February 13th, 2014, 7:00—9:00 p.m.**

*She is offering a workshop on Saturday, February 15th.*

*There is more space available.*

**PARKWAY HILLS BAPTIST CHURCH**

**2700 North Dallas Tollway, Corner of Chapel Hill**

**On the East Side of the Tollway**

**SOCIAL TIME—6:30 p.m.—MEETING TIME-7:00 p.m.**

**(Only board members will be admitted before 6:30 p.m.)**

