

Common Threads



January 2012

Volume 30, Issue 1

The President Says ...

A great time was had at the December meeting. There were lots of lovely scarves made by members. If you did not come you really missed a great time.

As we are all busy with the hustle and bustle of the holiday season may we all stop for a minute and reflect on the great year that our guild had. I hope that every member had a great year also.

The next time we meet it will be 2012. I don't make New Years' resolutions but I do always start the year trying to get my house in order (mainly the sewing room). I keep a list of all the projects that I have started. It seems that every year the list gets longer. Hope I live long enough to finish all of them, but there will always be a new piece of fabric that seems to have my name on it and takes me away from the old projects. Maybe I will get a few finished for the Plano show.

I hope everyone is working on a quilt for the show. Remember it does not have to be a large one. If you have never entered a quilt show let this be your first year to do so.

Have a great holiday and hope to see everyone at the January meeting.

M. J. Fielek



Just having fun



Margaret
Schafer



Rebecca Clayton



Joan Wilson

Visit our website at: www.quiltersguildofplano.org

Inside This Issue

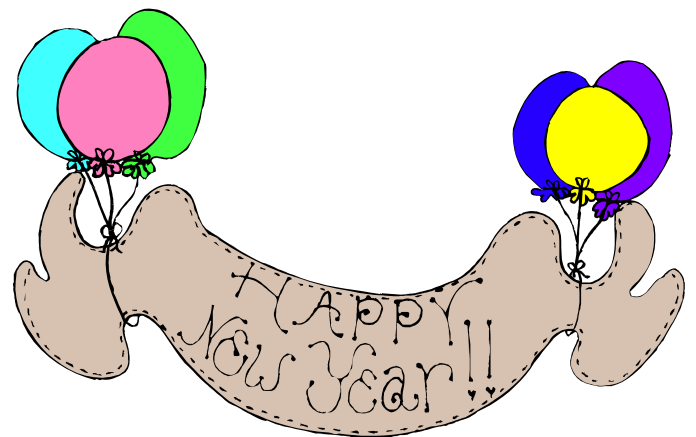
The President Says	1
Inside This Issue	2
Membership	2
January Birthdays	2
Block of the Month	3
Community Service	4-5
Officers and Committee Chairs	5
Advertisements	6-7
January Guest Speaker	7
Minutes—Monthly Meeting	8-9
Minutes—Board Meeting	10
By-Laws Report	11
Quilt Plano 2012	11
Treasurer's Report	12-13
Upcoming Guild Meeting	14

New Address—January 2011

Spruell, Tracy	Member #: 99
2732 Wolf Creek Drive	Spouse: Rodney
Lucas, TX 75002	Birthday: 05/16
Cell: 972-814-0516	Joined: 1995
tspruell@rocketmail.com	Group: A.D.O.s

January Birthdays

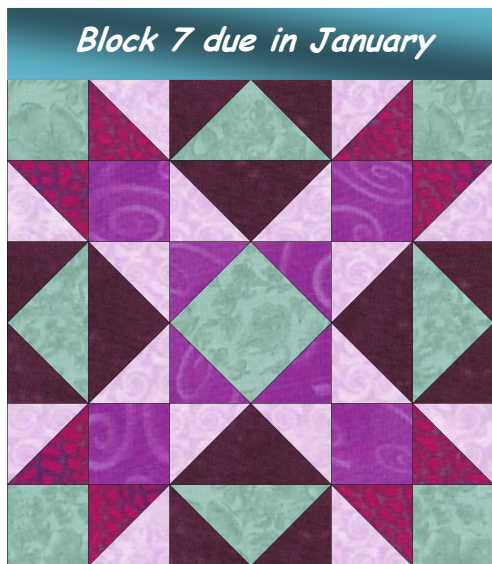
Sue Sydow	01/04
Betsy Gust	01/06
Ginny Kenney	01/08
Shirley Weaver	01/09
Nicole Montenegro	01/16
Tina Johnson	01/17
Maudie Auvenshine	01/17
Diane DeFreitas	01/20
Lisa Schultz	01/22
Kathy Bradbury	01/22
Helen Wilems	01/23
Anita Cepeda	01/27



Block of the Month for 2011 - 2012
by Tina Connolly

Win a \$35 gift certificate to Happiness is Quilting!!!!

I am going to repeat what I said last month to give everyone two chances to read it. Blocks 7 and 8 are on the website. The directions are the same for all of the blocks. Only the color placement is different. You may start and catch up at any time. Each month, I am giving one ticket for each block shown at the meeting. These tickets are going into a drawing for a \$35 gift certificate to Happiness is Quilting in McKinney. So, each person who has shown the first 4 blocks, already has 4 chances to win the certificate. Join us in making the Quiltmakers Puzzle and maybe you will win! Be thinking about an original setting for your "Quiltmaker's Puzzle" quilt. I highly recommend two books by Sharyn Craig, *Setting Solutions* and *Great Sets*. Either of these books will blow your mind when you see all the setting ideas.



Blocks of the month
shared by Lynn Fritche
and Shirley Weaver.

Hello Dear Members,

I am happy to report that the Stocking Project was a great success with 500 stockings going to the Soldiers' Angels organization and 662 filled plus 360 unfilled stockings for a total of 1,022 stockings for Parkland Hospital.

Although we got off to a rough start with the loss of two corporate donors, many of you generously supplied stocking stuffers and cash donations to help fill the gap. Also, a personal friend of La Dawn's supplied enough items to fill 200 stockings. We owe her a great big "Thank You"!

The Stocking Project would not be such success without the hard work of La Dawn Dalley. She works tirelessly to cut stocking kits, shop for stocking stuffers, organize and supervise how they are filled, and deliver them. Additionally this year, La Dawn has taken on 6 to 8 teens in the Service Learning Program, helping them learn how to sew stockings and how to fill them.

Due in large part to La Dawn's efforts and outreach, the Soldier's Angels organization awarded a framed certificate to the Guild as a recognition for supplying the stockings we make for them to fill and send to our troops overseas. I get such a warm feeling to know we are part of their efforts to bring some cheer to our troops away from home at the holidays.

Our Community Service quilts also continues to benefit from the efforts of many guild members. In December there were 3 afghans, 3 cuddle quilts, and 16 quilts turned in. Deliveries to our agencies included 19 pillowcases, 7 cuddle quilts, 24 fleece huggies, 3 fleece baby blankets, 43 quilts and 3 afghans. This shows how much our members work to make Community Service a big success for the Guild. The agencies which receive our quilts, etc. are truly grateful. Just think how much our donations mean to the children, teens and adults who are given a quilt, cuddle or afghan, during a time of discomfort or displacement in their lives. Giving tangible comfort can mean so much.

Reminders: All community service hours are due for the year 2011. The deadline to report your hours is January 12, 2012, which is the night of guild meeting. You can record your hours in the Big Black Binder at the Community Service table, or you can email Julie Schaefer at juliescha@sbcglobal.net.

The next 2nd Tuesday Sit & Sew will be January 10, 2012. We meet from 10 a.m. to 2 p.m.

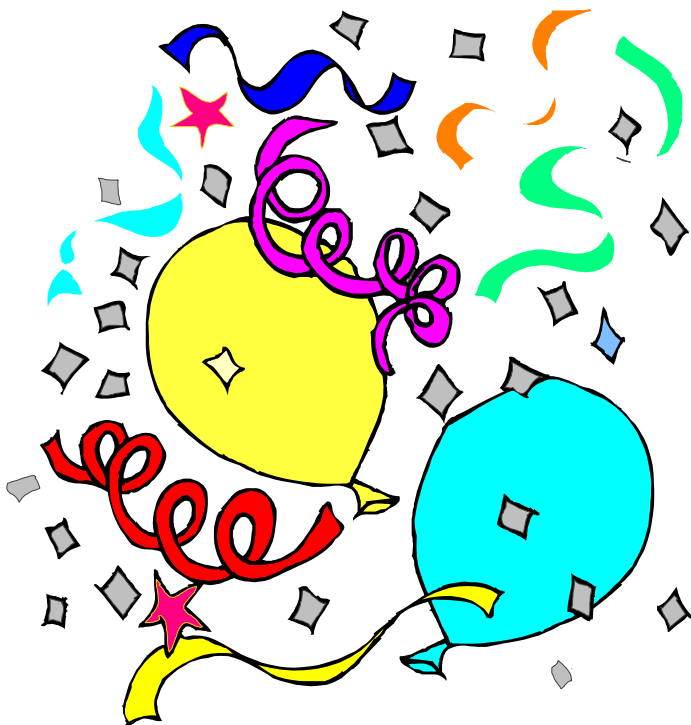
Continued on page 5

Community Service (continued)
—Terri Mendelow

and work on Community Service projects. If you can join us, please contact Karen

Christoffer so that she can make a space for you. Her email is karen.christoffer@tx.rr.com. We always have a great time at 2nd Tuesday and hope you can join us.

Finally, thank you to all who have worked so hard for Community Service. Your time and talent is very much appreciated!



Guild Officers and Committee Chairs
2011-2012

Officers

President	M.J. Fielek
VP Membership	Emily Armstrong
VP Programs	Donna Lobelson
VP Community Service	Terri Mendelow
	Crisann Skinner/ Maria Eakin
VP Guild Activities	Tina Connolly
VP Media	Julie Schaefer
Secretary	Donna Petrick
Treasurer	Becky Woods
Librarian	Kemberly Wilshire
Quilt Show 2011	

Committee Chairs

Assistant Membership	
Assistant Programs	Open
Assistant Treasurer	Madelyn Beachboard
Assistant Librarian	Emily Armstrong Debbie Skorepa
Block of the Month	Tina Connelly
Directory	Open
Door Prizes	Open
Education	Margaret Schafer
Fat Quarter Lotto	Open
Historian	Mindy Myint
Hospitality	Lut DeMeulder
Inventory Control	Lut DeMeulder
Newsletter Editor	Pat Fowler
Nine Patch	Janice Bentley
Publicity	Rose-Clair Fletcher
Retreat 2011	Janet Plotkin and ADOS Group
Service Quilts	Karen Christoffer
Show'n Tell	Karen Hawkins
Small Groups	Becky Woods
Stocking Project	LaDawn Dalley
TAQG	Sherry Worley
Web E-mail	Tina Connolly
Web Master	Beverly Geise

Happiness Is...QUILTING!

217 N. Kentucky, McKinney, TX 75069

972-542-8839

Shop Hours: Mon-Sat 10-5 & Thurs 10-7



**Have you
heard our news?**

**We've been
chosen as a
Quilt Sampler
Top Ten Shop!**

**Look for the issue
in the shop now!**

Join us for the
**North Texas
Patchwork Express**

June 23 & 24, 2012

Visit 7 Quilt
Sampler
Quilt Shops

\$159.95

"The Happiest Little Quilt Shop In Texas!"

www.HappinessIsQuilting.com

info@HappinessIsQuilting.com

**Advertise
Your
Business
Here**

COMMON THREADS AD RATES

Half Page:

1 month = \$40

3 months = \$90

Please make ads in "jpg" files and
email to Pat Fowler at

media@quiltersgroupofplano.org.

quiltersguildofplano.org

Business card:

1 month = \$15

3 months =

\$35

Quarter Page:

1 month = \$25

Fabric Fanatics — when only batiks will do . . .

3500 bolts of cotton batik fabric
from the top designers, at the best prices anywhere!

Classes with **Bonnie Hunter** filling fast! December 31st & January 2nd still open
Eileen Urbanek - Glacier Star - Technique of the month - March 1, 15 & 29
Eileen Urbanek - Bali Bedrunner - 2 day class - March 16 & 17

Lots of new fabric! Check them out in-store or on the web!

Located in Plano! 624 Haggard St., Suite 706 Plano, Texas 75074
972-881-7750

Located on the East side of Central Expressway between 15th St. and Park,
at the corner of Ave. G and Haggard Street.

New Hours Monday—Saturday 9-5

You can shop our entire stock online at www.fabricfanatics.com

Guest Speaker for January 12, 2012

Sherrill Lewis of Bead Ranch

Embellishing with Beads

Crazy Quilts! The epitome of embellishment! A magpie's paradise! Sherrill presents miscellaneous minutia gathered on her 30-year journey through the world of crazy quilting. She gives an historic overview of this alternate form of quilting and its various methods of construction, from its birth as an economy measure, adding tidbits from its Victorian heyday, through the Depression, and fast-forward into the 21st Century.

[Parkway Hills Baptist Church](#) - Non-member fee \$5



Minutes from December 8, 2011 - Julie Schaefer, Secretary

Guild President M.J. Fielek called the meeting to order at 7:00 p.m. The "Make and Take" activity of dying a silk scarf started immediately therefore the business meeting was informal.

M.J. asked for a show of hands on how many had read the latest newsletter. Many members had read it. The Guild has a new Newsletter Editor, Pat Fowler; she was praised for doing a beautiful, organized and newsworthy presentation with the latest Guild Newsletter. Changes to the November meeting minutes were called. There were none. M.J. called for a motion to accept the minutes as written in the Newsletter. Shelly Guibert so moved with a second from Joan Wilson. Motion passed. Changes to the Treasurer's report were called. None were presented therefore the Treasurer's report was accepted as written in the December Common Threads Newsletter. The Greenville Guild was present with their raffle quilt and Plano guild members were encouraged to buy raffle tickets.

OLD BUSINESS:

Kemberly Wilshire reviewed the new Bylaws and Policy and Procedures documents. There were copies of each at the membership table. Kemberly again explained the reasons for changing the present Bylaws. Any changes members find need to be emailed to her at kemberson@msn.com prior to the next general meeting on January 12th, 2012. Members will be voting on these two documents at this meeting.

NEW BUSINESS:

Blue Ribbon Quilt Shop will be having a "Guild Night" on the fourth Tuesday of every month.

All guild members will receive a discount on their purchases and 10% of the total purchases for that night will return to the Guild. January 24th will be the first night for the Plano Quilters.

The Guild will be using FedEx Kinko's for any large copying orders. Board members have a personal card with the account number for the Guild. All Guild members may also use the program for their own use and will receive a 30% discount off the original price at this time. The process to receive the discount includes using the 10 numbers of the Guild's account: 0444778261. All copy orders may be taken to FedEx Kinko's (now FedEx Office) in store or on line.

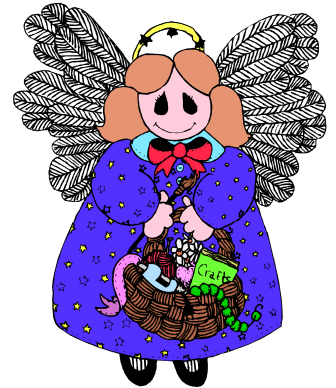
Emily Armstrong, VP Membership, reported 48 members present. New members present were Dee Ann McFarlin and Thelma Victor. All members received a door prize.

Cynthia Weisz showed 7 new mini quilts that had been turned in for auctioning at the Quilt Plano 2012 Show. Each member that turns in a mini has an opportunity to win a prize.

(Continued on Page 9)

Germaine Reconnu received the prize for this meeting.

LaDawn Dalley reported on the 2011 Stocking Project. 662 Christmas stockings were given to Parkland Hospital. LaDawn was able to fill 302 of these stockings from member donations; 360 stockings were given unfilled. Members from the Richland College Collegiate High School Program made 36 flannel receiving blankets, which were also delivered to Parkland. The Service Angels Organization received 300 stockings and the Guild was given an Award from this agency for our donations.



Terri Mendelow, VP Community Service, reported that a large quilt was delivered to the "Strengthening Families of North Texas" program; they were formerly known as the "Relief Nursery of Collin County". She also reported that many quilts had been turned in for donation to our assigned agencies. Members were to remember that the regular Sit and Sew continues in January on the second Tuesday of every month at the Plano Sewing Center. The next meeting will be January 10th, 2012. Members were reminded to get their Service Hours written in the black 3-ring binder at the table in back of the room or email them to Julie Schaefer at juliescha@sbcglobal.net The 2011 service hour documentation will be discontinued after the general meeting of January 12th. 2012 volunteer hours will start on January 1, 2012 and go through December 31, 2012.

Tina Connolly reported that 3 people had completed the Block of the Month. Lynne Fritsche and Shirley Weaver had theirs present and showed the blocks to the membership.

Kemberly Wilshire, Show Chair, reported that we had \$2500.00 committed sponsorship for the 2012 show. We will have all of the Plano Convention Center rented for this show. Members were reminded that if they "work the Show" they will receive a charm for their Guild Pins as well as free entrance to the show.

Janet Plotkin, Retreat Chair, had only one phrase to report: "Come! It's going to be fun."

Donna Lobelson reported that the program at January's meeting will be Cheryl Miller discussing crazy quilting and embellishing.

The Business meeting was adjourned at 7:24 p.m.

Board Meeting Minutes from December 5—Julie Schaefer

0 1 2 3 4 5 6 7 8 9 10 11 12

M.J. Fielek, Guild President, called the meeting to order at 7:05 p.m. at Tino's Restaurant. The next Board meeting will be January 9th, 2012 beginning at 7:00 in the Collin Creek Mall Tino's Restaurant.

Issues discussed:

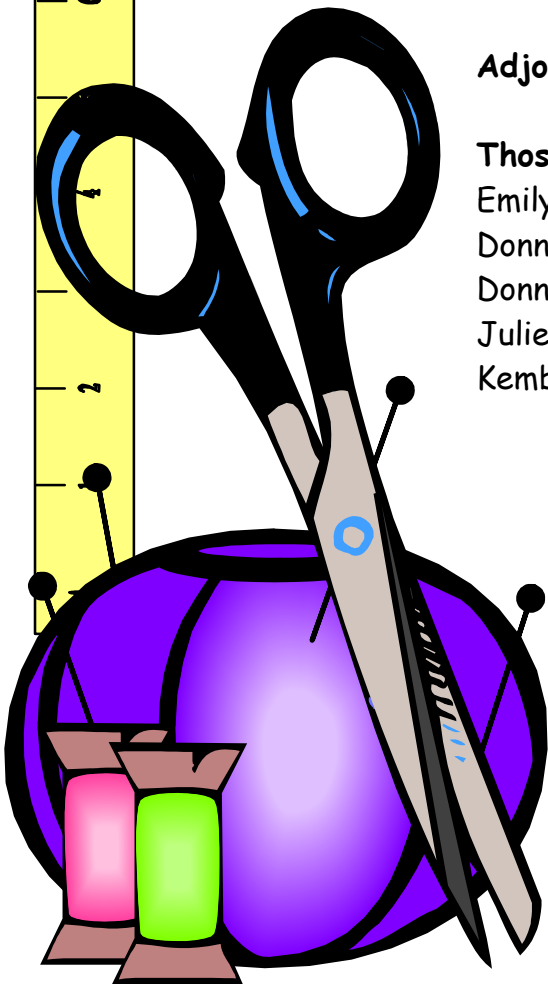
Refreshments and activities for December general meeting
Community Service business
Guild insurance policy
Retreat
Blue Ribbon Quilt Shop offering discount night
Using FedEx / Kinko's for copying large orders
Progress of quilt show. Next meeting January 16th.
Newsletter advertisement

Adjourned at 8:15.

Those present:

Emily Armstrong
Donna Lobelson
Donna Petrick
Julie Schaefer
Kemberly Wilshire

M.J. Fielek
Terri Mendelow
Janet Plotkin
Margaret Schafer



By-laws Committee—Kemberly Wilshire and Donna Petrick

Dear Members,

This is a reminder to look over the by-laws we handed out at the last meeting and included in the December Newsletter. We will be going over all the suggestions and make the final changes. The by-laws will then be sent out by email with the link to the final revisions and we will be voting on them at the January meeting. Please make sure if you have any questions you let Donna Petrick - mike.petrick@verizon.net or myself at kemberson@msn.com know as soon as possible. Revisions will be posted by the 5th of January so that you will have a week to go over them again.

This is a very important time as we are shifting the fiscal year and making some board position changes as well. The Education VP position will be added and the Library removed from the board and placed under a VP.

Thank you all for your comments and support we have received during this time of review.

Quilt Plano 2012—Kemberly Wilshire

We are very excited about the upcoming show. In January you will be able to pick up your raffle tickets for the new raffle quilt and see the quilt on display. If you are not able to be at the meeting in January, have no fear, we will be mailing your raffle tickets to you shortly after the meeting. If you have no intention of selling them or paying for them - please return them in February so that we can use them. We pay quite a bit for having these printed and the stock. So please help us save money on reprints by returning unused raffle tickets asap.

In February you will be able to purchase your t-shirts and other items for the upcoming show. We are wanting you to wear these shirts every time you go quilt shopping or out and about. This shirt we hope will draw a lot of attention for you to answer questions and tell everyone you know about the upcoming quilt show.

URGENT: I am looking for a couple of people to do some internet work for a couple of weeks in January. If you can sit at your computer, copy and paste information from the internet to a spreadsheet and format that information, then please contact me as soon as possible. I need some assistance in building a database of information that could assist us in advertising for our show like never before.

**We are moving along and preparing for the biggest show
our guild has ever had. Come join the fun!**

Treasurer's Report—November 30, 2011—Donna Petrick

Balance Sheet

Income/Expenses YTD

Account	Balance
Bank Accounts	
Grant Acct. 2010-2011	244.00
Guild Checking	24,429.08
Guild Money Market	<u>38,095.23</u>
TOTAL Bank Accounts	<u>62,768.31</u>
Cash Accounts	
Membership Petty Cash	<u>50.00</u>
TOTAL Cash Accounts	<u>50.00</u>
Deposit Accounts	
Annual Quilt Show Deposit	5,725.00
Quilt show Deposit	0.00
Retreat Deposit	0.00
TOTAL Deposit Accounts	<u>5,725.00</u>
Grand Total Assets	<u>68,543.31</u>
Liability Accounts	
Retreat Fees	(3,456.02)
Texas Sales Tax Collected	<u>(223.57)</u>
TOTAL Liability Accounts	<u>(3,679.59)</u>
Equity	<u>(64,863.72)</u>
Grand Total Liability/Equity	<u>(68,543.31)</u>

Category Description	INCOME
Administrative Income	
Interest Income	33.53
Petty Cash Income	0.00
Other Administrative Income	<u>25.00</u>
TOTAL Administrative Income	<u>58.63</u>
Community Service Income	
Charity Stockings	<u>337.07</u>
TOTAL Community Service Income	<u>337.07</u>
Guild Product Sales	
Pins	<u>27.71</u>
TOTAL Guild Product Sales	<u>27.71</u>
Library Income	
Library Book Sales	112.00
Other Library Income	<u>316.00</u>
TOTAL Library Income	<u>428.00</u>
Media Income	
Newsletter Advertisements	15.00
Other Media Income	<u>10.00</u>
TOTAL Media Income	<u>25.00</u>
Membership Income	
Membership Dues 2010-2011	250.00
Membership Dues 2011-2012	1,975.00
Other Membership Income	<u>670.00</u>
TOTAL Membership Income	<u>2,895.00</u>
Programs Income	
Grant Income Contracted Services	683.09
Workshop Fees	0.00
Other Programs Income: Workshop Fees	<u>990.00</u>
TOTAL Programs Income	<u>1,673.09</u>
Quilt Show Income	
Admissions Show Revenue	13,789.75
Advance Ticket Sales	2,237.00
Catalog Advertising Revenue	1,112.34
Mini Quilt Auction Revenue	2,534.00
Raffle Quilt Revenue	3,655.00
Registration Entry Fee Revenue	1,191.70
DVDs	33.29
Quilt Show—Concessions	858.00
T-shirts	58.19
Other Quilt Show Income:	
Show Products Revenue	450.00



(Continued on Page 12)

Treasurer's Report—Donna Petrick (Continued)

Income/Expenses YTD—November 30-2011

Vendor Fee Revenue	2,932.25	Supplies and Equipment	27.11
Other Quilt Show Income	<u>29.40</u>	Workshop Facility Rent	75.00
TOTAL Quilt Show Income	<u>28,880.92</u>	Workshop Teacher Fees	675.00
		Other Programs Expenses	<u>489.32</u>
TOTAL INCOME	<u>34,325.42</u>	TOTAL Programs Expenses	<u>3,407.98</u>

EXPENSES

Administrative Expenses	
Bank Charges and Supplies	54.47
CPA Expenses	332.50
Non Grant Liability Insurance	0.00
PO Box rental	104.80
Service Pins	16.20
Storage	770.00
Supplies, Postage, Printing	657.28
Other Administrative Expenses	<u>0.00</u>
TOTAL Administrative Expenses	<u>1,935.25</u>

Community Services Expenses

Charity Stockings	846.59
Grant Public Education	<u>90.75</u>
TOTAL Community Service Expenses	<u>937.34</u>

Guild Activities Expenses

Block of the Month Expenses	<u>10.80</u>
TOTAL guild Activities Expenses	<u>10.80</u>

Guild Products

Guild Pin Purchase	<u>0.00</u>
TOTAL Guild Products	<u>0.00</u>

Media Expenses

Newsletter Postage	17.60
Newsletter Printing	22.17
Other Media Expenses	<u>41.31</u>
TOTAL Media Expenses	<u>81.08</u>

Membership Expenses

Bulk Mail Prepay Deposit	198.00
Directory Printing	<u>1,037.48</u>
TOTAL Membership Expenses	<u>1,235.48</u>

Program Expenses

Grant Expense Contracted Services	797.90
Guild Meeting Facilities Rent	250.00
Lecture Fees	250.00
Speaker Lecture Fees	350.00
Speaker Lodging	158.18
Speaker Meals	101.92
Speaker Travel	233.55

Quilt Show Expenses

Administrative Expenses	
Postage, Supplies	976.23
TOTAL Administrative Expenses	976.23

Show Prize Ribbons	1,203.48
TOTAL Award Ribbons	1,203.48

Facilities Catering Expenses	2,014.14
Facilities Deposit and Rent	11,620.00
Glove and Apron Purchase	110.70
Judges Lodging	77.97
Judges Postage and Supplies	28.50
Judges Travel	127.60
Judging Fees	800.00

Other Quilt Show Expenses:

Judges Expenses	83.86
TOTAL Judges Expenses	1,117.93

Mini Quilt Expense	47.33
Promotional Expenses	0.00
Advertising and Publicity	357.53
TOTAL Promotional Expenses	357.53

Quilt Show Expenses-Education	71.51
Raffle Quilt Expenses	735.97
Registration Ad Expenses	356.56
Security Service	700.00
Show Catalog Printing	1,450.50
Show Door Prizes	59.73
DVDs	717.50
Pins	500.00
Show Sign Printing	25.98
Vendor Gift Bags	53.80
Vendor Postage, Printing, Supplies	96.81
Other Quilt Show Expenses	<u>400.00</u>
TOTAL Quilt Show Expenses	<u>26,279.87</u>

TOTAL EXPENSES

33,887.80

OVERALL TOTAL

437.62



QUILTERS GUILD OF PLANO
PO BOX 260216
PLANO, TEXAS 75026

The Quilters Guild of Plano is funded in part by the City of Plano.

The Quilters Guild of Plano does not discriminate on the basis of race, color, national origin, sex or handicap.



Quilters Guild of Plano
Presents
Sherrill Lewis of Bead Ranch
(See Information on page 10)
January 12, 2012
Parkway Hills Baptist Church
2700 North Dallas Tollway
Corner of Chapel Hill
On the East side of the Tollway
SOCIAL TIME - 6:30 p.m. ~ MEETING TIME - 7:00 p.m.
(Only board members will be admitted before 6:30 p.m.)