



COMMON THREADS

March 2010

Volume 28, Issue 3

CONTENTS

Ad Rates	8
Birthdays	5
Block of the Month	9
Board Highlights	6
Comm. Service	4,5
Fiber Artists	2,3
Guild Officers	8
Membership	7
Membership Renewal Form	10
Mini Quilt Rules	3
Minutes	2
President's Message	1
Prez Sez	8
Programs	4
Quilt Plano 11	3
Retreat Wrap-up	7
Small Groups	7
TAGQ Rally Day	2
Treasurer's Report	8
Upcoming Events	6

Visit our website:
www.quiltersguildofplano.org

Newsletter of the Quilters Guild of Plano

Hello Everyone

Now I'm really tired of winter. Having to cancel the guild meeting and then being house bound was not fun. Thankfully the bad weather only lasted a short while. I was really looking forward to hearing our speakers and visiting with all you guild members. At least I used my time to get ready for Retreat. I've prepped blocks for two queen size quilts. Have a couple more things to get ready to take to Retreat. I am sure I'm overly optimistic about how much I can get accomplished. With the activities that are planned for us, it may be hard to get as much sewing done as I'm planning. It will be a lot of fun to be with so many of you. By the time you read this, we will have gotten back home. It will be interesting to see show and tell in March to see how much was done at Retreat.

We received an email from a lady in England looking at our basket blocks from BOM several years ago. She wants to use them for her group, the Oast Quilters in Canterbury.. She is also thinking it would be fun to do a block exchange between members there and our guild. If you are interested in doing this and maybe heading it up, I will give you the information. Just email or call and let me know. The lady comes to Houston most years. It would be fun to meet there and get to know each other.

With no meeting this month, I didn't get to talk to you about volunteering for an office with the guild. The nominating committee needs your help. Please come forward and help lead the guild in another great year. It won't be long until we get started on the next quilt show. The Plain 'O Piecers have already started on the raffle quilt for 2011. Community Service has lots of great projects for us. We have some wonderful speakers lined up for the new year. So much fun ahead of us. Come share in it.

One other thing I wanted to talk about at guild was making a change in the BOM. Our enthusiasm has declined over the last few years, even though we have had wonderful quilt blocks. I wonder if we need a change of plans. What about someone leading a mystery quilt? The leader would give us a step each month. She could tell how many of certain blocks to make for a certain size quilt. Members would make and keep their own blocks, using their own color way. We could show them each month. Then at the end of the year, we could show the completed tops. The board is open to suggestions. It would be wonderful to see lots of people participating again. Think about a new approach to BOM and let the board know you are ready to help.

See you at Retreat. Happy Quilting,
Donna Petrick



MINUTES OF JANUARY 14, 2010 - Sheri Smith, Secretary

The February 11, 2010 meeting of the Quilters Guild of Plano was cancelled due to snowy weather conditions.

TAQG Rally Day 2010

TAQG Rally Day is July 10th, 2010. **Cynthia England** will be our speaker. Along with an award winning entertaining speaker we will have lots of door prizes, a mini quilt auction, two wonderful raffle baskets, both featuring a sewing machine and lots of raffle quilts on display. Make plans now to attend Rally Day with others from your guild or small sewing groups. Admittance is free for all persons belonging to a guild which is a member of TAQG. Non-members pay \$20 admittance.

One raffle basket will be for tickets bought before July 10th. The second raffle basket will be for tickets sold at Rally Day only. You do not have to be present to win. Get your pre-rally day tickets from your TAQG representative.

Cynthia England will also have two workshops. The first workshop is Thursday, July 8th and will feature the Pansy Table Runner. It is one of her new designs which feature regular piecing as well as her technique of freezer paper piecing. The second workshop will be Friday, July 9th and will feature a half day of designing from a picture plus a half day of sewing a design from one of her patterns. Information on how to sign up for the workshops will be available on the TAQG web site as of March 1st. Both classes are limited to 30 people and will be filled on a first come, first served basis.

Fiber Artists of Texas Exhibit Requests Submittals & Volunteers

The Texas Museum of Fiber Arts (TMFA) is having a month-long exhibit at the Mexican American Cultural Center (MACC) in Austin, Texas and needs your expertise. The MACC has graciously allowed fiber artists who enter our competition to display their works at their facility for the entire month of May. During that month, students will be invited to view the art and take part in demonstrations of the creative processes.

What TMFA needs from you is a commitment to a day and time during which you would discuss your art and demonstrate the skills employed in its creation. Demonstrations should last no more than 1 to 2 hours. You can pick the day and time that is convenient for you and we will schedule students accordingly. Also, it is helpful if you state a preference for the age of the students you wish to enlighten. This is a wonderful opportunity to advertise your fiber arts workshops. Please help us to bring your art to the youngsters which is a major part of TMFA's mission.

If you can participate, please contact Sharon Colson, Activity Coordinator, at sharon.colson@yahoo.com. Thanks so much for making TMFA a working organization.

See next page for entry rules and information.

Fiber Artists Call for Entries!

You are invited to participate in the Texas Museum of Fiber Arts 2010 Exhibit , a month long exhibit at the beautiful and monumental Mexican American Cultural Center located in Austin, Texas. The exhibit will be from May 1 to May 31, 2010.

This year there are 4 prize awards. Prizes for GENERAL entries consist of:

- 1st place prize of \$500
- 2nd place prize of \$250
- 3rd place prize of \$100 gift certificate

NEW THEMED prize is \$500.

The theme is "Texas---a Blending of Cultures." Texas is a blend of many cultures, predominantly Mexican American. Creativity in this area may consist of an expression of how Texas and other cultures have been blended; for example, in concepts, design, materials, genre, language, history, music, dance, food, symbols, arts, dress, politics, technology, literature, and life-styles. Lighting and sound can be added in exhibiting the art. The juror is Liz Good, senior editor of FiberArts Magazine. The DEADLINE for entry is March 15, 2010. Go to www.texasfiberarts.org to access the form.

If you have any questions, contact Carol Ikard, Executive Director, Texas Museum of Fiber Arts (512) 784-5651 or carol@texasfiberarts.org

QUILT PLANO 2011 - Kemberly Wilshire

Hello Plano Guild!

I am getting very excited about the upcoming 2011 Quilt Show. We will start meeting in late March – so to get things started, I need a couple of recruits!

Co-chair – this person would work alongside me and learn the ropes for the next show and help me keep my sanity.

Raffle Quilt Chair – this person would schedule the comings and goings of the raffle quilt and making sure those signed up to take the quilt out get the cash box and the quilt.

Publicity Chair (for the show) – you will have a great book to help guide you on where to put the advertising resources that best serves us.

Advertising for the Catalog – you will have help from different chairs to help you get the advertisers that help pay for the catalog

Admissions – this person will be in charge of advance ticket distribution and collection of money and then the show admissions.

Registration – this is the actual controlling of the quilts that we show in the quilt show - signing them in and signing them out to their owners

Please contact me if you are interested in working the upcoming show on our committee. Get a friend a share a job!!

Kemberly Wilshire, Show Chair 2011
214-244-4324, kemberson@msn.com

PROGRAMS & WORKSHOPS - Donna Lobelson

What a shame we had to cancel February's meeting and class. All the children in the neighborhood seemed to enjoy the snow. My power was off for less than two hours. The other side of the street wasn't as lucky; they lost power for close to 24 hours. Barb and Teresa, our February speakers, were very understanding. They probably weren't looking forward to driving from Denton. I am working with them to reschedule as soon as possible. All workshop fees paid can be returned or may be applied to an upcoming workshop of your choice.

This month Linda Reynolds, director of the East Texas Research Center at Stephen F. Austin State University (SFA), in Nacogdoches, will share with us her knowledge about the history of quilts of east Texas. She has interviewed quilters from Nacogdoches, San Augustine, Blair and Livingston to uncover their stories.

A professor at Texas Women's University wrote a thesis about quilters in urban areas, Reynolds said. "It is interesting to see how the stories of the urban women differ from those of the rural women," she said. "For women living in the country, quilting clubs are a social outlet. It's their way of checking up on each other — of making sure that they're all OK."

Reynolds has photographed the quilts and made them available for viewing online. Each entry includes the name of the quilt, the name of the quilter and a short story. Some of the entries have accompanying audio files. The collections have been imaged and made available through the Institute of Museum and Library Sciences-funded Texas Tides program (<http://tides.sfasu.edu>).

Re-scheduled – Barb McCraw and Teresa Sherling

Date TBD – Folded Flowers Workshop

May 2010 – Jaynette Huff

- Friday, May 14th – Mardi Gras "Party Pops"
- Saturday, May 15th – Lamplight in the Window

September 2010 – Kaye England

- Friday, September 10th – Scrap Mania
- Saturday, September 11th – Plates, Wedges and More, plus (Partially Pieced Quilts)

Name: _____
Address: _____
City and Zip: _____
Phone: _____
Email _____

TOTAL AMOUNT ENCLOSED: _____

Workshops are \$40/day for members; \$45/day for non-members

Members receive a discount if they sign up 35 days prior to the workshop.

PPQ's

Enclose a self-addressed stamped envelope to receive the supply lists via USPS. Supply lists may also be printed from the website. Your telephone number and email are particularly important so we can reach you in the event of any last minute changes. Copy or clip and bring completed form to a meeting, or mail to:

Donna Lobelson
8828 Haddington Lane
Dallas, TX 75287

COMMUNITY SERVICE – Julie Schaefer

The count for this month is 7 quilts and 2 fleece blankets to the Children's Advocacy Center, 7 quilts to the Rape Crises Center and I believe that I will be taking the accumulation of 7 afghans, 1 fleece blanket and 3 quilts to the Veterans Administration. By now y'all should know of course that June Austin, Tina Connolly's mom, crochets the afghans. I am in the process of making a knitted lap afghan with a 24 row pattern and I have to keep looking at the pattern over and over. Yet June seems to know just what to do on her afghans; maybe I should learn to crochet.

We had our February Community Service Tuesday Sew Day on February 9th. As it turns out, our one and only "Prez" Donna Petrick had put together all the fabric and was the efficient leader for the day. It was very

cold out but 12 people braved the weather with their machines including a new member to the Guild. Sally Martens is her name and if you see someone at the general meeting probably with Barbara Collins and you don't recognize the face, it will probably be Sally. She is a worker and we are glad to have her not only for the Guild but sewing our community service quilts. Be sure to say a friendly "hello" to her. It was good to have Dan Mills come by to sew with us too.

Don't know about the rest of you, but I am looking forward to Retreat 2010. Janet Plotkin has done an absolutely fantastic job putting the whole thing together and all with the élan, patience and sense of humor that defines and describes her and why we love her so much. During the Retreat, of course, we always have something to be done for Community Service. Karen Christoffer, before going off to LA and New Orleans, gave me two large carry-all net bags full of 80 some packs of fabric to make pillowcases for ConKerr Cancer. This agency's mission is to brighten the lives of sick children in hospitals through homemade pillowcases. I spent a couple days putting together a 2 page explanation along with pictures of how to make the "rolled" or "French seam" pillowcase. That way I shouldn't have to give a verbal explanation. I tried to explain to my friend Elaine Vehige who was doing one as an example at one of our bee meetings and that's when I found out that I needed to write it up. I'm hoping that when I am back from Retreat, I will be able to say that there aren't any more kits left - they are all completed and going to Karen. Karen won't be at the Retreat, so she is depending on me to do it. We, of course, will have to do at least 20+ more to fulfill our commitment.

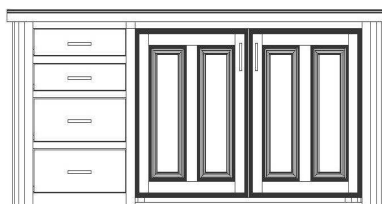
I really missed not having the regular meeting on Thursday night. I have many tops to be quilted and I was hoping to get some back in return to take to our agencies. I also didn't get to see your friendly faces. My husband says that this extreme weather is the result of global warming. I would have just liked the "warming" part.

Remember: Second Tuesday is Community Service Sew Day at the *Plano Sewing Center*. The next one is March 9th. Come and go on your own schedule. We are there from 10:00 to 4:00. *Plano Sewing Center* is on the southeast corner of Custer and Spring Creek. See you at Retreat or next month. Don't forget that Dallas will have its show the 12th through the 14th of March.

March Birthdays

Marla Bradberry.....	03/01
Carol DiSantis	03/01
Jeanne Vogel	03/02
Rebecca Clayton	03/04
Audrey Couvillon	03/07
Barbara Collins.....	03/08
Donah Baker	03/11
Dayna Ragland.....	03/11
Ginger Walker	03/12
Leslee Feiwus	03/17
Karen Hawkins	03/17
Karen Woodard	03/18
Pam Walsh	03/19
Cathy Woodson.....	03/19
Erika Ingelhofer	03/22
Marian Manning.....	03/22
Sharon McGinnis.....	03/25
Melody Perez	03/30

Sew-Good Cabinets



*Custom
designed sewing
solutions*

**See us at Dallas Quilt
Celebration 2010!
March 12, 13, 14
Booth 144-147**

See our complete line of products at:
Blue Ribbon Quilt Shoppe
Downtown Wylie, TX
See our year-end clearance items –
only a few models remain!

972-675-0901
susan@sewgoodcabinets.com
Visit us at:
www.sewgoodcabinets.com

BOARD MEETING, FEBRUARY 8, 2010

Sheri Smith, Secretary

The meeting was called to order at Tino's Restaurant at 6:45 p.m. Prior meeting minutes were approved. Treasurer Shirley Weaver passed out financials from June 09 to Jan. 10.

Items discussed:

- New website changes were discussed. Beverly needs an assistant.
- New Member Tea discussed. It will be on April 18th at 2:00 p.m.
- Workshop at Sigler Elementary School discussed.
- Donna showed the block Cynthia Weisz made with our logo on it that will be sent to another guild for their raffle quilt.
- A location for the June meeting is still needed. Donna Lobelson is working on that.
- Small groups will start helping membership at the next meeting. Cathy LaManna has a schedule.
- The Sharing and Caring committee will meet February 12th at the Corner Bakery at 1:00 p.m.
- A letter from England was shared and might be an opportunity for a block exchange.
- Motion passed to discontinue the fat quarter lotto for the next year.
- The nomination committee has the list of officers and chairpersons needed.
- The directories need to be out earlier than last year. Dues are due by the June meeting or your name will not be in the directory.

The meeting was adjourned 8:00 p.m.
Sheri Smith, Secretary

Those in attendance:

Donna Petrick	Donna Lobelson
Sheri Smith	Shirley Weaver
Crisann Skinner	Julie Schaefer
Maria Eakin	Margaret Schafer
Tina Connelly	

UPCOMING EVENTS—Brooks Wilson

March 11-13, 2010 - "A Log Cabin Odyssey," Dallas Quilt Celebration, presented by the Dallas Quilt Guild, Dallas Market Hall. For more information, go to www.quiltersguildofdallas.org.

March 26-27, 2010 - "With Heart and Hand," Azalea Quilt Show, presented by the Quilters Guild of East Texas, Harvey Convention Center, Tyler. For more information, go to www.qgetx.org.

April 21-24, 2010 - American Quilters Society Quilt Show, Paducah Expo Center, Julian Carroll Convention Center and the new AQS Pavilion. Featuring Kaffe Fassett, Eleanor Burns and Ricky Tims. Paducah, Kentucky. For more information, go to www.americanquilter.com.

May 7-8, 2010 - "America the Beautiful," presented by the Quilters Guild of Arlington. Bob Duncan Community Center, 2800 S. Center Street in Vandergriff Park, Arlington, TX 76014. For more information, go to www.QGOA.org.

Happiness Is...QUILTING
217 N. Kentucky, McKinney, TX 75069
972-542-8839
Shop Hours: Mon-Sat 10-5 & Thurs 10-7

Kathy Schmitz Trunk Show
Arrives 2-23

ConKerr Pillow Case Challenge

Check Website for Details

Love is in the Air at Happiness Is...Quilting!

"The Happiest Little Quilt Shop In Texas!"
www.HappinessIsQuilting.com

MEMBERSHIP - Crisann Skinner & Maria Eakin

We are currently working on the survey for the Caring and Sharing Committee and are really interested in your input. If you did not attend the January guild meeting, please make plans to attend our next meeting on March 11th. We will have the survey at the Membership Table. Please pick one up on your way in and when you are done filling it out, you can drop it off at the Membership Table. Once we get all the surveys in, we will announce the results at the April guild meeting.

The New Members Tea will be held from 2-4pm on April 18th at Legacy Bank of Plano. We will be mailing invitations to new members in March. If you are not a new member, but are looking for a bee/group to join, we would like to have you join us as well. We will have more details at the March guild meeting and in next month's newsletter.

Please look for the Membership Renewal Form in the newsletter for the next three months (March, April, and May). Things were so chaotic last year due to unforeseen circumstances, so we wanted to make sure everyone had plenty of time to get their renewals in by the end of May. It is important we get all renewals in no later than the end of May. The directory will be sent to the publishers the early part of June so we can get them back and distributed to the members quickly.

Want to surprise one of your quilting friends? If you would like to gift a membership or membership renewal to a friend, just fill out a Membership or Membership Renewal Form with your friend's information and either mail the form with payment to the address on the form, or give it to Crisann Skinner or Maria Eakin at the Membership Table at the guild meeting. When paying by check, please write 'Gift Membership' and the person's name in the 'For' area of your check (lower left corner of your check). Please make sure to let the person know you have paid for their membership/renewal as the only thing we keep track of is whether the membership/renewal was paid or not.

If you have any questions, please speak to Crisann or Maria at the Membership Table.

RETREAT 2010 WRAP-UP - Janet Plotkin

Retreat 2010 was fabulous. Sixty-five of us enjoyed sewing, eating, line dancing, beading, calisthenics, door prizes, singing, poetry, games and shopping at *Happiness is... Quilting*.

Now it is time to look ahead to Retreat 2011 - the weekend of February 17 - 20, 2011 at the lovely and Tanglewood Resort on the shore of Lake Texoma.

I do not have pricing yet but that should not stop you from sending in your deposit of \$50.00. Your deposit holds your space and we only have space for 66 attendees.

The payment plan will be offered with the first payment due on April 1, 2010 and then on the first of each month until the full and final payment on November 1, 2010. This schedule allows for everyone to be paid in full before the holiday season is upon us. Single payers need to send their deposit and pay their balance on or before November 1, 2010.

Please make checks payable to QGP and send them to Janet Plotkin, 3116 Ipswich Drive, Plano, TX 75025-5732

Remember to check out QGPretreat at Yahoogroups.com for all the details.

SMALL GROUPS - Cathy LaManna

Are you interested in joining a small group? The following groups are looking for additional members. Their contact information is in the Membership Directory.

DAYTIME:

Crazy Quilters—1st Fridays and 4th Saturdays

(Cathy LaManna)

Quilting Memories—every other Tuesday
(Lut De Meulder)

Sew N Sews, Tuesdays
(Rhonda Kurtz)

Sneeze No More, 1st and 3rd Thursdays
(Carrie Oransky)

EVENING:

NET Gang, 4th Tuesdays (Maria Bradberry)

WEEKEND:

Quilty Pleasures, 1st and 3rd Sundays
(Mindy Myint)

TREASURER'S REPORT - Shirley Weaver

January 2010 Cash Flow & Net Worth

Category Description	Amount
INFLOWS	
Administrative Income	
Interest Income	14.92
Community Service Income	0.00
Guild Product Income	0.00
Media Income	
Newsletter Advertising	244.80
Membership Income	
Guest Fees	4.62
Membership Dues 2009-2010	90.00
Programs Income	0.00
TOTAL INFLOWS	<u>354.34</u>
OUTFLOWS	
Administrative Expenses	
Supplies, Postage, Printing	76.08
Community Service Expenses	
Charity Stockings	329.05
Program Expenses	
Grant Expense Contracted Services	1,800.00
Guild Meeting Facilities Rent	50.00
Speaker Lodging	63.80
Speaker Meals	10.53
Total Program Expenses	1,924.33
TOTAL OUTFLOWS	<u>2,529.46</u>
OVERALL TOTAL	<u>-2,175.12</u>
Overall Guild Net Worth	<u>\$54,425.15</u>

PREZ SEZ

Are you staying warm in this cold winter? Think of what a comfort it is to receive one of the wonderful community service quilts we give away each month. Someone needs our love and help. Karen has packets ready in all stages, piecing, quilting or binding; whatever you want to do. Plan on picking up one or several quilt packets at the next guild meeting.

OFFICERS OF THE GUILD - 2009-10

President	Donna Petrick
VP-Membership	Crisann Skinner
VP-Programs	Donna Lobelson
VP-Community Service	Julie Schaefer
VP-Guild Activities	Margaret Schafer
VP Media	Tina Connolly
Secretary	Sheri Smith
Treasurer	Shirley Weaver
Librarian	Emily Armstrong
Quilt Show 2011	Kemberly Wilshire
<u>Committee Chairs</u>	
Assistant - Membership	Maria Eakin
Assistants - Programs	Sherry Worley
Assistant - Treasurer	Karen Hawkins
Assistant - Librarian	Becky Woods
	Debbie Skorepa
Small Groups	Cathy LaManna
Block of Month	Dayna Ragland
Stocking Project	LaDawn Dalley
Directory	Lynne Fritsche
	Gail Schwartz
Door Prizes	Rebecca Clayton
Education	Teresa Knode
	Amanda Dierling
E-mail/Web Master	Beverly Geise
Fat Quarter Lotto	Mindy Myint
Historian	Nanette Gaskey
Hospitality	Terri Mendelow
	Teri Anderman
Inventory Control	Sharon Schenke
Newsletter Editor	Brooks Wilson
Nine Patch	Terri Anderman
Publicity	Rose-Clair Fletcher
Retreat 2010	Janet Plotkin
	and ADOS group
Service Quilts	Karen Christoffer
Show 'n Tell	Karen Hawkins
TAQG	Aggie Meszaros

COMMON THREADS AD RATES

Business card:	Half Page:
1 month = \$15	1 month = \$40
3 months = \$35	3 months = \$90
Quarter Page:	Please make ads in "jpg" files
1 month = \$25	and email to Brooks Wilson at
3 months = \$60	media@
	quiltersguildofplano.org

Background - cream:

A - cut one square $1\frac{1}{2}$ " X $1\frac{1}{2}$ " , draw a diagonal line on the wrong side of fabric

B - cut two rectangles $2\frac{1}{2}$ " X $6\frac{1}{2}$ "

C - cut two rectangles $2\frac{1}{2}$ " X $10\frac{1}{2}$ "

Cake layers - (choose your “flavor”):

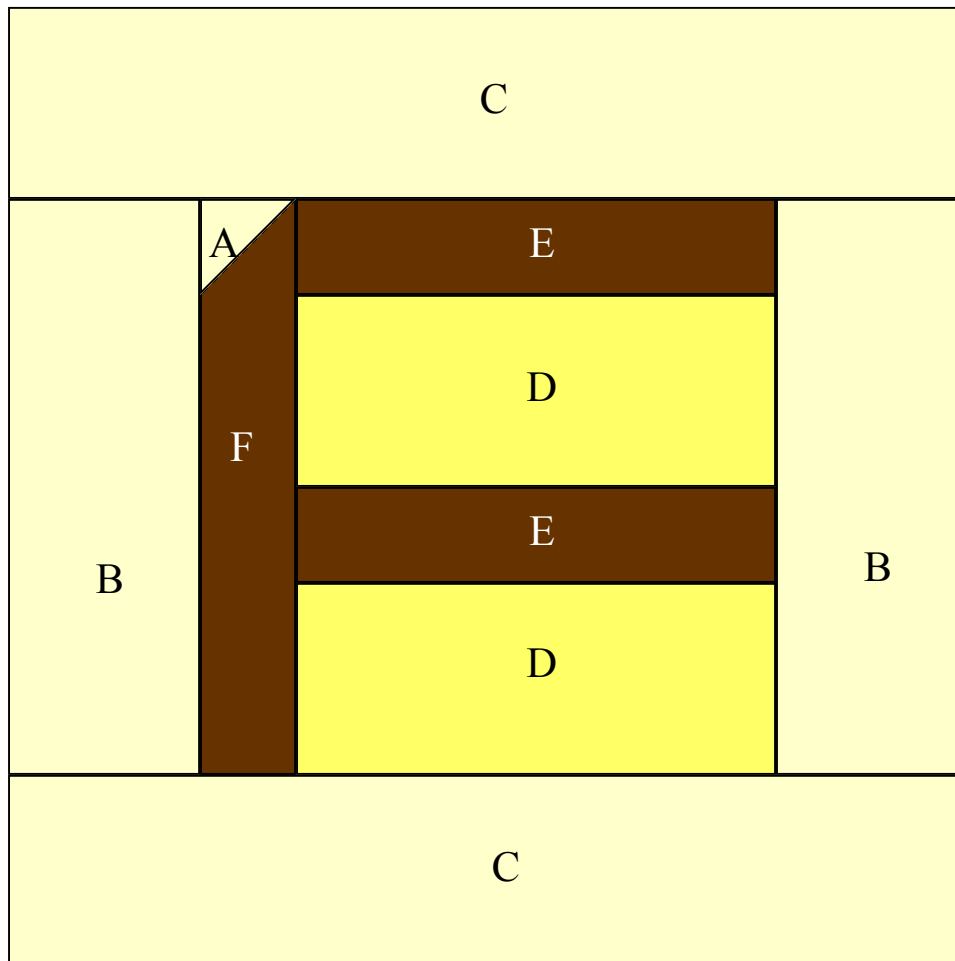
D - cut two rectangles $2\frac{1}{2}$ " X $5\frac{1}{2}$ "

Icing - (choose your “flavor”):

E - cut two rectangles $1\frac{1}{2}$ " X $5\frac{1}{2}$ "

F - cut one rectangle $1\frac{1}{2}$ " X $6\frac{1}{2}$ "

Directions for sewing: Lay the A square at one end of the F rectangle. Sew on the diagonal line to form the A/F piece. Press open and trim the excess cream fabric from the back. Sew the Ds to the Es and then sew together to form the cake/icing layers. Sew the A/F piece to the layered piece. Sew the B pieces to the sides and then the C pieces to the top and bottoms. Unfinished size should be $10\frac{1}{2}$ " X $10\frac{1}{2}$ ".



Office Use Only: Date Received: _____
Amount: _____
 Cash Check # _____

Quilters Guild of Plano Membership Application (for New or Renewing Members)

PLEASE PRINT LEGIBLY:

Name: _____

Address: _____

Phones: home: _____ work: _____ cell: _____
STREET CITY STATE ZIP

Email: _____ birthday: _____ spouse's first name: _____
MONTH/DAY ONLY

If interested in joining a friendship group, check which time is most convenient:

morning afternoon evening weekend

Check those committees where you would like to volunteer or learn more about their activities:

Historian Small groups Guild products Education Directory
 9-Patch Block of the Month Service quilts Library Membership
 Door prizes Programs Holiday stocking project Quilt Show (various jobs)

Please share with us a list of your skills, talents and hobbies that you would like to share with the Guild:

Demographic information: (this information is necessary for the Guild to obtain grants from various sources)

Age 18-34 35-54 55 or older Gender female male

Ethnicity White (not of Hispanic origin) Black (not of Hispanic origin) Hispanic
 American Indian or Alaskan Native Asian or Pacific Islander Other

How did you hear about the Guild?

Guild web page Guild member Another guild
 Guild newsletter other publication
 Other (please describe) _____

Membership dues are \$25 per year, and are due June 1st. New members joining after January 1st will pay a reduced rate of \$15 for the remaining months of the year. Members are listed in the Directory if their information is received before August 1st.

Active membership is granted on receipt of application and paid dues. Active members attend Guild meetings, participate in Guild activities and/or work on committees. All active members have voting privileges.

Dues include website access to the monthly on-line newsletter. If you prefer a hard copy sent to your home, please add \$10 to help defray the cost of printing and mailing. Mail your completed form with a check (made payable to "QGP") to the following address:

**Membership
Quilters Guild of Plano
5000 York Lane
Plano, TX, 75093**

The Quilters Guild of Plano is a not-for-profit 501(c)(3) entity and does not discriminate on the basis of race, color, national origin, sex or handicap.

QUILTERS GUILD OF PLANO
PO BOX 260216
PLANO, TEXAS 75026

*The Quilters Guild
of Plano is funded in
part by the City of
Plano.*

*The Quilters Guild
of Plano does not
discriminate on the
basis of race, color,
national origin, sex
or handicap.*



*Quilters Guild of Plano
Presents*

*Linda Reynolds
"History of Quilts in East Texas"*

March 11, 2010

Parkway Hills Baptist Church
2700 North Dallas Tollway
Corner of Chapel Hill
on the east side of the Tollway

SOCIAL TIME - 6:30 pm ~ MEETING TIME - 7:00 pm
(Only board members will be admitted before 6:30pm)