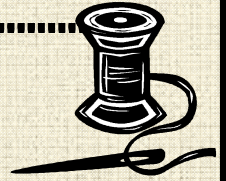


COMMON THREADS

APRIL 2008

VOLUME 26, ISSUE 4



NEWSLETTER OF THE QUILTERS GUILD OF PLANO

Contents

Ad Rates.....	2
Block of the Month.	2
Board Highlights.....	2
Community Service	6
Fat Quarter Lotto	2
Guild Officers	2
Library	2
Minutes	3
Nominating Msg.....	5
President's Message	1
Programs.....	7
Retreat 2008.....	3
Show N Tell.....	6
Treasurers Report....	5
Upcoming Events....	4
Webmaster News	5
Workshop Sign-up ..	6



Newsletter Deadline

For Ads and Articles
is

ALWAYS

Saturday Midnight

AFTER the Guild
Meeting

Please don't be late!

Membership to the Quilters Guild of Plano is open to anyone interested in quilts or quilting.

Annual dues are \$25. Membership is from June 1-May 31. If joining after January 1, new membership dues are \$15.

President's Message

Emily Armstrong



It looks like April will be a relatively quiet month. We've made it through St. Patrick's Day and Easter. Now we just have the Fourth of July, Mother's Day, Memorial Day and Father's Day. The fall holidays will begin again in earnest after September. I guess this is when we get to take a deep breath and watch the kids go back to school after the summer holidays are over. And all we have to do is survive another summer with the kids at home.

I'd also like to mention just how much I enjoyed the Dallas Quilt Show. I was a little sad it was on the same weekend as the North Texas Irish Festival, but in life – as with parenting – one must pick one's battles. It was great to see the gorgeous quilts and I loved the vendors. It's all so inspiring. I did get some stuff for a new project, but just one. More or less. And some notions that I know I'll love.

The Nominating Committee has done a wonderful job of finding volunteers for our Board and Committee positions that would otherwise be vacant. You'd be surprised at how hard it is to run a Guild without those positions (like Programs) filled. I know most everyone has Caller ID now, but please try and help out Gail and the others when they call. Even if you really can't do it alone, perhaps your Small Group can or you know a talented Small Group that could do one of the VP jobs. Having served one the Block of the Month committee and two Board positions, I can tell you that they are very fun and rewarding.

So until next month, keep those quilts for Show and Tell coming! Happy quilting and I hope to see you at the April 10th meeting!

Are you Online?

This newsletter was sent as an e-mail attachment. Let us know if you like it. Many guilds are going paper free these days. If you did not get the e-mail and thought you should, check with membership to see if your e-mail is up to date. You can e-mail Lorraine at sylveroz@tx.rr.com. Be sure to include your name!

Board Highlights

Emily Armstrong

Executive Committee Meetings are held monthly the Monday following our general membership meeting. **The next meeting is scheduled for April 14th, 7:00 pm at the home of Kemberly Wilshire—2420 Timbercreek Dr. Plano, TX 75075.**

Guild members wishing to attend are welcome and requested to email president@quiltersguildofplano.org with the topic they wish to discuss so it can be included on the agenda.

Block of the Month

Tracy Spruell

This month is the Vanity Set Block. If you need a pattern, please see the guild website or call me. This block is very cute.

The block has 3 very simple paper piecing sections and then the entire block is assembled in columns. Feel free to use some silver lame in the mirror if you are brave enough to sew lame, I am not!



COMMON THREADS

AD RATES

Size	One-Time	3 Issues*
Business card size	\$15.00	\$35.00
Quarter Page	\$25.00	\$60.00
Half Page	\$40.00	\$90.00

*Must be three consecutive issues.

Send PC compatible ads or copy to: Donna Petrick at media@quiltersguildofplano.org

ADS MUST BE PAID FOR IN ADVANCE

Make checks payable to: Quilters Guild of Plano

Mail to: Donna Petrick
3816 Dutton Drive
Plano, TX 75023

Quilters Guild of Plano

Officers for 2007-2008

The list of officers is as follows:

President	Emily Armstrong
VP-Membership	Lorraine Morse
VP-Programs	Ann Brooks
VP-Comm Serv	Sheri Smith
VP-Guild Act	Margaret Schafer
VP Media	Donna Petrick
Secretary	Brooks Wilson
Treasurer	Tina Connolly
Librarian	Nanette Gaskey
Quilt Show 2009	Kemberly Wilshire

Committee Chairs

Assistant - Programs	Marvel Link, Suzanne Larsen, Julie Schaefer
Assistant - Treasurer	Beverly Geise
Bee Keeper	Cathy LaManna
Block of Month	Sewciety Women - Tracy Spruell
Christmas Stk Project	Ladawn Dalley
Directory	Jeanne Parker
Door Prizes	Diane Crandell
Education	Teresa Knode
E-mail/Web Master	Beverly Geise
Facilities	N/A
Fat Quarter Lotto	Marla Bradberry & Sandra Goeke
Guild Products	Elaine Taylor
Historian	Rhonda Kuntz
Hospitality	Terri Mendelow
Inventory	Sharon Schenke
Newsletter Editor	Tracy Spruell
Nine Patch	Peggy Marshall
Publicity	Rose-Clair Fletcher
Retreat 2008	Quilt Soup - Gail Schwartz
Service Quilts	Karen Christoffer
Show 'n Tell	Daniel Mills
Texas Area Quilt Guilds	Nanette Gaskey

Fat Quarter Lotto

Marla Bradberry

Winners for last month are listed in the minutes. Thank you to all who participated! All fat quarters will need to be 100% cotton and measured on the fat quarter board at the table.

Next Month's Categories are:

- 1) **Manly Things**
- 2) **Oriental Designs**
- 3) **Anything Goes (your choice)**





March 13, 2008 Minutes

Brooks Wilson

Meeting was called to order at 7:14 pm by President Emily Armstrong. She asked everyone to please silence their cell phones and pagers.

Gail Schwartz then gave a report on a successful retreat. Gail also spoke for the Nominating Committee and their need to fill the positions of Assistant Treasurer, VP of Media, VP of Programs, Nine Patch, Inventory, Assistant Programs, and Guild Products. She will begin calling guild members to fill those positions.

Tina Connolly gave the Treasurer's Report for January – which did not appear in the newsletter due to a technical error, and the February Treasurer's Report. Emily requested a motion to accept the reports as stated by Tina. Julie Schefer made the motion, Sheri Smith seconded the motion, and it was carried by all members present.

Sheri Smith gave the Community Service Report. The Guild has a need for more volunteers for the Blacklands Prairie Festival on May 11. The volunteers will work in two hour shifts. This Festival is an informative celebration of the Plano area from the 1880's to the 1930's. Please contact Sheri Smith if you are interested in participating by demonstrating hand quilting and red work specifically or other quilting skills.

Sherry Worley spoke for the TAQG Rally Day and mentioned that one of the speakers for TAQG Rally day in July was vendor #79 at the Dallas Quilt Show and please stop by and mention how much you are looking forward to seeing her at TAQG.

Beverly Geise announced that the winner for this month's Block of the Month was Rhonda Kuntz for the show block.

Marla Bradberry announced that the Fat Quarter Lotto winners were: Girlie Things – Karen Hawkins; Pastels – Sheri Smith; and Anything Goes – Julie Schefer.

Terri Mendelow announced this month's new mem-

bers. Lorraine Morse announced the Door Prizes as Show and Tell lined up. After Door Prizes, Karen Hawkins announced this month's Show and Tell quilts.

Ann Brooks then introduced Connie Lipton and her Redwork quilts as the evening's program.

The meeting was adjourned by Emily Armstrong at 8:45pm.

Retreat 2008

Gail Schwartz

This year's guild retreat at Tanglewood has come and gone. Sixty-three attendees had a wonderful, productive, creative time. We laughed, sewed, ate, laughed, slept, laughed, sewed. It was a celebration of community, artistry, craftsmanship and good will. The room was abuzz with chatter and the whir of sewing machines. Laughter was prominent. Everywhere one glanced, there was a quilt in progress...on a table, at a machine, on the floor, on the walls. There were so many beautiful projects.

Thanks to everyone who helped make this year's retreat so much fun. We had lovely door prizes donated by guild members, Carriage House and some fabric manufacturers. Carriage House was our vendor for the last time and they will be missed.

It is always a bit sad to leave Tanglewood and return to the responsibilities and limited quilting time of daily life. It's also hopeful and exciting...to finish a project one began at retreat or to begin collecting fabrics for ideas you gleaned at retreat.

We are already busy planning Retreat 2009. Look for details in upcoming newsletters.

Gail Schwartz and Quilt Soup



Upcoming Events

April 11-12, 2008

Miller-Bowie Quilt Show and Sale
Fair States Fairgrounds
3700 E. 50th St. Texarkana, TX-AR
<http://www.miller-bowiequiltshow.info>

April 25-26, 2008

Mayfest 2008 Quilt Show
Lakeview Quilters Guild
Alvin, TX
[Http://www.lakeviewquiltersguild.org](http://www.lakeviewquiltersguild.org)

May 9-10, 2008

“Black and White and Read All Over”
Quilters Guild of Arlington Annual Quilt Show
Bob Duncan Center, Arlington, TX
[Www.qgoa.org](http://www.qgoa.org)

May 11, 2008

Blackland Prarie Festival
Haggard Park
Plano, TX

June 7-8, 2008

Abeline Quilters Guild 14th Annual Regional Quilt Show
Abeline Civic Center
Abeline, TX
[Www.abelinequiltguild.org](http://www.abelinequiltguild.org)

July 15-19, 2008

Quilt Guild of Greater Houston Quilt Show
Houston Baptist University
[Www.qggh.org](http://www.qggh.org)

July 25-27, 2008

“Threads of Our Past”
New Braunfels Kongresshalle (Civic Center)
380 South Seguin Avenue
New Braunfels, TX 78130

August 7-9, 2008

Festival of Machine Quilters
Plano Centre
Plaqg.org



Horn Sewing Cabinet for sale.

41.75” width, 29” high, depth 20.25” closed, 40” open.
2 drawers with storage space for serger. Platform for
serging or pressing

Asking \$250.00 OBO

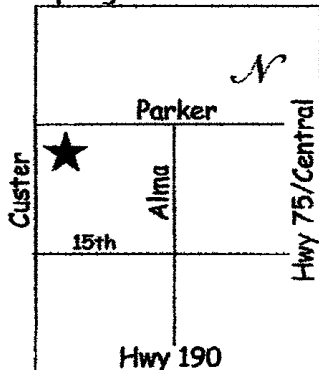
Sharon McGinnis 972-467-5799



www.carriagehousequilts.com
972-758-9916
Emailshoppe@hqshoppe.com

3000 Custer Rd., #170,
Plano, TX 75075

Spring Creek



Come visit us and browse our Shoppe. We are located at the intersection of Parker and Custer Roads, on the Southeast Corner in Plano.



We have joined forces with several other shops around the country. Visit each of the shops online and purchase their block/s. Then choose a finishing kit for your quilt. Each of the shops has designed a unique quilt from these blocks, so you will have plenty of choices.

www.websamplercelebration.com

Carriage House will be closing its doors at the end of May when our lease runs out.

We would like to thank the members of the Plano Guild for their support over the years.

Come in and take advantage of our closing down sale

Shoppe Hours: Mon - Sat, 10-5, Sun. 1pm-5

Treasurers Report

Tina Connolly

1/1/2008—1/31/1008

INFLOWS

Interest Income	17.69
Library Book Sales	200.89
Newsletter Advertisements	32.33
Membership dues 2007-08	15.00
Workshop Fees	355.00

TOTAL INFLOWS 620.91

OUTFLOWS

Safe Deposit Box Rental	25.00
Guild Activities Expenses	114.26
Newsletter Printing	241.20
Membership Expenses	0.20
Programs Expenses	1,293.50

TOTAL OUTFLOWS 1,674.16

OVERALL TOTAL (1,053.25)

2/1/2008 – 2/29/2008

INFLOWS

Interest Income	14.85
Newsletter Advertisements	80.26
Workshop Fees	135.00

TOTAL INFLOWS 230.11

OUTFLOWS

Storage	210.00
Guild Activities Expenses	335.38
Membership Expenses	400.00
TOTAL Programs Expenses	1,466.65

TOTAL OUTFLOWS 2,412.03

OVERALL TOTAL (2,181.92)



Nominating Committee

Gail Schwartz

Guild Board and Committee Chairs 2008-9

The nominating committee has been busy building a slate of candidates for this year's new board. We have only a few opportunities left. We are asking for people with the desire to use their unique talents to step forward and be a part of the new board. This is a great opportunity to use your skills or to learn new ones. Officer positions we have available are:

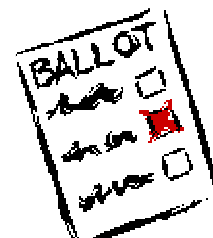
1. **VP Programs**, which would be a great job for a small group to take on...you share the responsibilities, so the load is light and you get to choose who we will have at the Guild meetings. The programs are in place for next year, so you will be planning one year out.
Chairmanships we have available are:
2. **Assistant Programs**
3. **Guild Products**

Nominees:

President - Donna Petrick
 VP Membership - Julie Brooks
 VP Community Service - Sheri Smith
 VP Guild Activities - Emily Armstrong
 VP Media—Tina Connolly
 Secretary - Julie Schaefer
 Treasurer - Judy Johnson
 Librarian - Nanette Gaskey
 Quilt Show 2009 - Kemberly Wilshire

Bee Keeper - Cathy LaManna
 Block of the Month - Knotty Girls, Dianne DeFreitas
 Christmas Stocking Project - Ladawn Dalley
 Door Prizes - Diane Crandell
 Education - Teresa Knode
 E-mail/Webmaster - Beverly Geise
 Fat Quarter Lotto - Marla Bradberry & Sandra Goeke
 Historian - Rhonda Kuntz
 Hospitality - Terri Mendelow and Terri Anderman
 Newsletter Editor - Brooks Wilson
 Retreat 2008 – Terri Anderman and Quilt Soup
 Service Quilts - Karen Christoffer
 Show 'n Tell - Karen Hawkins
 Texas Area Quilt Guilds - Aggie Meszaros
 Nine Patch – Terri Anderman
 Publicity- Rose-Clair Fletcher
 Directory- Lynne Fritsche & Gail Schwartz
 Inventory - Sharon Schenke?

Thanks for your willingness to participate in a leadership role in our Guild!



Webmaster News

Beverly Geise

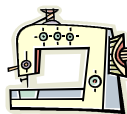
Retreat was fabulous! Did you take pictures? I sure would love to have them to put on the website! Send them to webmaster@quiltersguildofplano.org, with the names of the people in them. Small group and project pictures are especially good!

Are you receiving your newsletter online? I am using the email address you have provided to the guild. If you are not getting your newsletter, please check your bulk or spam folder for it. If you still do not have it, please let me know at webmaster@quiltersguildofplano.org.

Workshop Registration Form

Marvel Link

Workshops are: \$35/day for members
\$40/day for non-members



Hours: 9:00 am – 4:30 pm

Bonus!! Advance Registration Discount

Prepayment of registrations **received 35 days** prior to the scheduled event, entitles enrollees to take a \$5.00 discount with each prepaid workshop.

May 9 – 10th: Susan Cleveland

- Fri, May 9th – Piping Hot Curves, Macaroni, Legacy Bank Community Room
- Sat, May 10th – Piping Hot Binding, Plano Chamber of Commerce Community Room

June 13th: Laura Wasilowski

- Fri, June 13th – Woodcut Quilts, TBD

August 15th: Cynthia England

- Fri, August 15th – TBD

See the guild website at www.quiltersguildofplano.org and go to the programs page for more information. Fees are refundable only in the event the speaker cancels her appearance. Questions may be directed to Marvel Link through email: link_family@bcglobal.net or call her at 972-931-1594

Name: _____

Address: _____

City and Zip: _____

Phone: _____

Email: _____

Enclose a self-addressed stamped envelope to receive the supply lists via USPS. Supply lists may also be printed from the website. Your telephone number and email are particularly important so we can reach you in the event of any last minute changes.

TOTAL AMOUNT ENCLOSED: _____

Copy or Clip and mail your registration form to:

Marvel Link
6910 Blue Mesa Drive
Dallas, TX 75252
OR

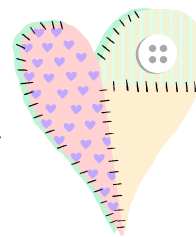
Bring Completed Form to a Meeting



Community Service

Sheri Smith

In the month of March we had 28 quilts turned in. That is outstanding! We surely do have a lot of gifted, generous members. Thank you all for participating.



Our next big event is the Backland Prairie Festival on May 11, 2008, from 11am to 6pm. Ideally we would like 4 volunteers for each two hour shift. We need two hand quilters and two people to work on red-work embroidery. If you were not at the March 13, meeting and did not get a chance to sign up, please call Teresa Knode or email her at bearhugquilts@yahoo.com.

There will be no Community Service table at the April meeting, due to Trash to Treasures, but if you have completed projects I will accept them. If you need to pick up kits to work on at that meeting please contact me at SSheriS@verizon.net on or before Monday April 7 and I will bring only what is requested.

Show and Tell

Quilter	Quilt Name
Rhonda Kuntz	<i>Cheater Baltimore Fancy Hats Gone Crazy Unnamed</i>
Diane Crandell	<i>Wilkey's Cabin in the Woods</i>
Sherry Worley	Unnamed
Emily Armstrong	<i>Jen's Quilt Libby's Baby Quilt</i>
Sheri Smith	<i>Sunbonnet Sue Striplly Speaking</i>
Karen Hawkins	<i>Sweet at Retreat Kitties at Retreat</i>
Dan Mills	<i>Crazy Quilt</i>

Programs

Ann Brooks



Can you believe it's time for the **\$10 & 10% Garage Sale!** Remember, we're handling it a bit differently this year. You pay \$10 for a table (which you can share with as many of your friends as you wish). At the end of the evening, donate 10% of your proceeds to the Guild. Please send me an email if you want a table... otherwise, we might not have enough tables set up. This is always lots of fun and I hope this year will be even easier. Get your quilt-related stuff in order and gather your friends!

Connie Litfin gave such a wonderful program last month. Embroidered quilts were very popular in the 1900's. Many of us remember quilts such as these in our families. What charming quilts!

My term ends in May. I've been a program chair three times now and it's the most fun job in the guild. You meet so many people – speakers, members, quilters in other guilds. It has broadened my horizons and skills to choose a variety of programs that cover as many aspects of quilting as possible each time. Marvel and I have most of next year set up. Consider taking this position. You'll enjoy working with our speakers as you plan 2009-10.

UPCOMING PROGRAMS

MAY – Susan Cleveland



<http://www.piecesbewithyou.com>

Learn to make perfectly beautiful bindings and pipings. Susan is an accomplished, popular teacher. She has this technique down perfectly and has lots to share.

JUNE – Laura Wasilowski

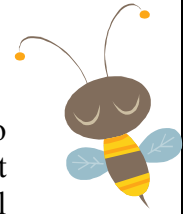
<http://www.artfabrik.com>

Laura and three friends are the founders and professors of the ersatz Chicago School of Fusing. In addition to showing many beautifully graphic and intricate quilts she sings the most amusing quilting songs. You'll be amazed at this fast and easy method for making wall quilts.

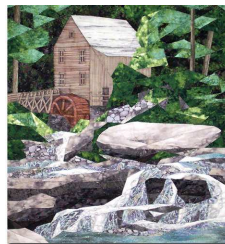


JULY – Salute to the Bees!

I've already heard from two bees who are each certain they are the best, most fun group in the Guild. Every bee will have some time (how much time depends on how many bees want to show their stuff!) Let me know soon if your bee has some exciting things to show and share. You can do a show & tell, recite quilt poetry or even sing like Laura W. Be as creative as you always are.



AUGUST – Cynthia England



www.englanddesign.com

Cynthia is a commercial artist, lifelong quilter, and a personal friend. She has so much to tell us about fabric and color selection, selecting a scene to create in fabric, and how to break any picture into straight-line pieces. She is very generous and thorough about sharing her knowledge; and besides, she's lots of fun.

SEPTEMBER – Lisa Erlandson

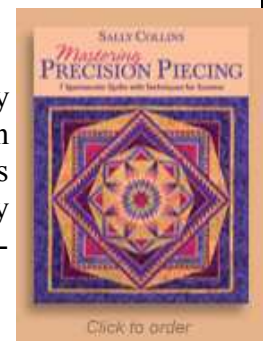
Quilt historian and appraiser from Greenville will talk to us about historical quilts and orphan blocks.

OCTOBER – Teri DeBolt

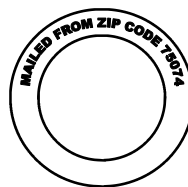
A wonderful quilting teacher at area Bernina shops, Teri is known for machine-work. Come see what she can do... and what you will be able to also.

NOVEMBER – Sally Collins

The master of miniatures! Sally has published several books on precision piecing, miniatures and borders. We are very lucky to have this internationally-known quilter.



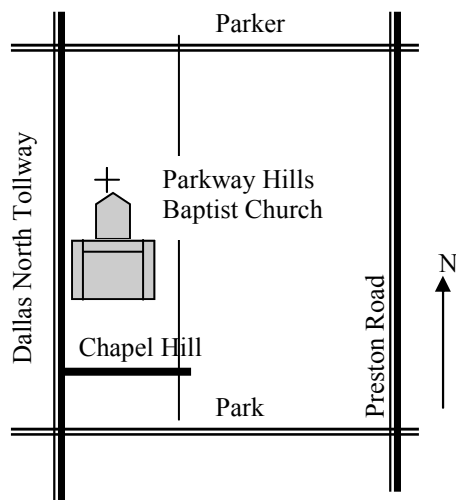
QUILTERS GUILD OF PLANO
PO BOX 260216
PLANO, TEXAS 75026



NONPROFIT ORG.
US POSTAGE
PAID
PERMIT NO. 341

POSTMASTER: DATED MATERIAL—Please deliver by April 1, 2008

Items to bring to the meeting on April 10:
Vanity block for Block of the month drawing
Fat quarters for Fat Quarter Lotto
\$\$ for Trash to Treasures finds
2007-2008 Membership Card
Show and Tell items



Visit our website:
www.quiltersguildofplano.org



SOCIAL TIME - 6:45 pm
MEETING TIME - 7:15pm
(Only board members
will be admitted
before 6:45pm)

Quilters Guild of Plano

April 10, 2008

Trash to Treasures!

Parkway Hills Baptist Church
2700 North Dallas Tollway
Corner of Chapel Hill
on the east side of the Tollway

*The Quilters Guild of Plano is funded in part by the City of Plano
The Quilters Guild of Plano does not discriminate on the basis of Race,
color, national origin, sex or handicap*

